

FURUNO

OPERATOR'S MANUAL

COLOR LCD SOUNDER

Model **FCV-1150**

ECF

(Elemental Chlorine Free)

The paper used in this manual
is elemental chlorine free.

FURUNO ELECTRIC CO., LTD.

9-52 Ashihara-cho,
Nishinomiya, 662-8580, JAPAN

• FURUNO Authorized Distributor/Dealer

All rights reserved. Printed in Japan

Pub. No. OME-23780-G

(ETMI) FCV-1150

A : DEC. 2007

G : SEP. 10, 2020



0 0 0 1 6 7 7 2 9 1 6

IMPORTANT NOTICES

General

- This manual has been authored with simplified grammar, to meet the needs of international users.
- The operator of this equipment must read and follow the instructions in this manual. Wrong operation or maintenance can void the warranty or cause injury.
- Do not copy any part of this manual without written permission from FURUNO.
- If this manual is lost or worn, contact your dealer about replacement.
- The contents of this manual and the equipment specifications can change without notice.
- The example screens (or illustrations) shown in this manual can be different from the screens you see on your display. The screens you see depend on your system configuration and equipment settings.
- Save this manual for future reference.
- Any modification of the equipment (including software) by persons not authorized by FURUNO will void the warranty.
- The following concern acts as our importer in Europe, as defined in DECISION No 768/2008/EC.
 - Name: FURUNO EUROPE B.V.
 - Address: Ridderhaven 19B, 2984 BT Ridderkerk, The Netherlands
- All brand, product names, trademarks, registered trademarks, and service marks belong to their respective holders.

How to discard this product

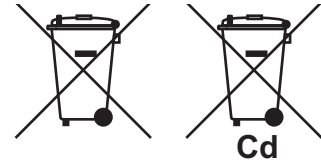
Discard this product according to local regulations for the disposal of industrial waste. For disposal in the USA, see the homepage of the Electronics Industries Alliance (<http://www.eiae.org/>) for the correct method of disposal.

How to discard a used battery

Some FURUNO products have a battery(ies). To see if your product has a battery, see the chapter on Maintenance. If a battery is used, tape the + and - terminals of the battery before disposal to prevent fire, heat generation caused by short circuit.

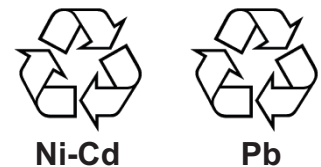
In the European Union

The crossed-out trash can symbol indicates that all types of batteries must not be discarded in standard trash, or at a trash site. Take the used batteries to a battery collection site according to your national legislation and the Batteries Directive 2006/66/EU.



In the USA

The Mobius loop symbol (three chasing arrows) indicates that Ni-Cd and lead-acid rechargeable batteries must be recycled. Take the used batteries to a battery collection site according to local laws.



In the other countries

There are no international standards for the battery recycle symbol. The number of symbols can increase when the other countries make their own recycle symbols in the future.



SAFETY INSTRUCTIONS

The operator and installer must read the applicable safety instructions before attempting to install or operate the equipment.



WARNING

Indicates a potentially hazardous situation which, if not avoided, could result in death or serious injury.



CAUTION

Indicates a potentially hazardous situation which, if not avoided, can result in minor or moderate injury.



Warning, Caution



Prohibitive Action



Mandatory Action



WARNING



ELECTRICAL SHOCK HAZARD Do not open the equipment.

Hazardous voltage exists inside the equipment. Refer repair to authorized service personnel.



Immediately turn off the power at the switchboard if something is dropped into the equipment.

Continued use of the equipment can cause fire or electrical shock.



Immediately turn off the power at the switchboard if the equipment is emitting smoke or fire.

Continued use of the equipment can cause fire or electrical shock. Contact a FURUNO agent for service.



Do not disassemble or modify the equipment.

Fire, electrical shock or injury can result.



WARNING



Do not put containers with liquids on the top of the equipment.

Fire, electrical shock or injury can result.



If you feel that the equipment is acting abnormally, immediately turn off the power at the switchboard.

If the equipment is excessively warm or making strange noises, immediately turn off the equipment at the switchboard.



Keep the equipment away from rain and water splash.

Fire, electrical shock or injury can result if water leaks into the equipment.








Use the proper fuse.




Use of an incorrect fuse can damage the equipment and can cause fire.



Do not operate the equipment with wet hands.

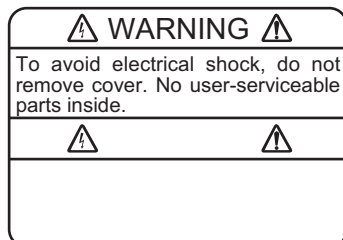
Electrical shock can result.

 CAUTION	
	Do not transmit with the transducer out of water. The transducer will be damaged.
	Do not use depth information for navigation while the picture advance speed is set to "stop". The depth indication is not refreshed while the picture is stopped. Use of depth data for navigation in this case could lead to grounding or other dangerous situation.
	Do not handle the LCD's panel roughly; it is made of glass. Injury can result if the glass breaks.
	Do not use high-pressure cleaners to clean this equipment. This equipment has the waterproof rating outlined in the specifications, at the back of this manual. However, the use of high-pressure cleaning equipment can cause water ingress, resulting in damage to, or failure of, the equipment.

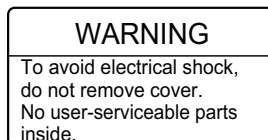
 CAUTION	
	Properly adjust the gain. Too little gain may present no picture. Too much gain shows excessive noise on the picture. Using the depth data for navigation when the gain is incorrectly set can lead to a dangerous situation.
	The data presented by this equipment is intended as a source of navigation information. The prudent navigator never relies exclusively on any one source of navigation information, for safety of vessel and crew.

Warning Labels

Warning labels are attached to the equipment. Do not remove the labels. If a label is missing or illegible, contact a FURUNO agent or dealer about replacement.



Name: Warning Label (1)
Type: 86-003-1011-3
Code No.: 100-236-233-10



Name: Warning Label (2)
Type: 803-129-1001-3
Code No.: 100-236-743-10

TABLE OF CONTENTS

FOREWORD	v
SYSTEM CONFIGURATION	vi
1. OPERATION	1
1.1 Control Description.....	1
1.2 Power On/Off	2
1.3 Adjusting Display Brilliance	2
1.4 Selecting a Display.....	2
1.4.1 Single frequency display.....	2
1.4.2 Dual frequency display	3
1.4.3 Zoom display	3
1.4.4 User 1 and 2 displays	5
1.5 Selecting a Range.....	5
1.5.1 Range adjustment method.....	5
1.5.2 Manual range adjustment	5
1.6 Shifting the Range.....	6
1.7 Adjusting the Gain.....	7
1.7.1 Selecting gain adjustment method.....	7
1.7.2 Manual gain adjustment.....	7
1.8 Measuring Depth.....	8
1.9 Menu Operating Procedure.....	8
1.10 Picture Advance Speed.....	9
1.11 Rejecting Interference	9
1.12 Erasing Weak Echoes.....	10
1.13 Rejecting Clutter.....	10
1.14 Adjusting TVG	11
1.15 A-scope Display	12
1.16 Alarms	13
1.17 FUNCTION Control	15
1.17.1 Using the FUNCTION control	15
1.17.2 Programming the FUNCTION control	15
1.18 Waypoints	16
1.18.1 Entering a waypoint	16
1.18.2 Editing waypoints.....	17
1.18.3 Erasing waypoints.....	17
1.18.4 Setting destination waypoint.....	18
1.19 Fish Information (Accu Fish)	18
1.19.1 Consideration for fish information	18
1.19.2 Turning on Accu Fish.....	18
1.19.3 Displaying fish symbols	19
1.19.4 Displaying fish info.....	19
1.19.5 Selecting the display where to show the fish symbols.....	19
1.19.6 Applying offset to measured fish size.....	20
1.20 Menu Description	20
1.20.1 Sounder menu	20
1.20.2 Tx/Rx menu	24
1.20.3 Display menu.....	25
1.20.4 Stabilizer menu.....	26
1.20.5 Data menu	26
1.20.6 NavNet menu.....	28
2. SYSTEM MENU	29
2.1 How to Open the System Menu	29
2.2 User Menu	29
2.2.1 User menu description.....	29
2.2.2 Selecting data for nav data displays.....	31
2.3 Range Menu	33
2.4 Key Menu	34
2.5 Language Menu	34
2.6 Units Menu.....	34
2.7 Calib Menu.....	34
3. MAINTENANCE & TROUBLESHOOTING	37
3.1 Maintenance	37
3.2 Care of Display Unit.....	37
3.3 Transducer Maintenance	37
3.4 Fuse Replacement.....	37
3.5 Battery Voltage Alert	38
3.6 Troubleshooting	38
3.7 Self Test.....	38
3.8 LCD Test.....	40
3.9 Restoring Default Settings	40
MENU TREE	AP-1
SCREEN LAYOUT	AP-5
SCREEN DIVISION	AP-8
NAVNET MODE AND FUNCTION AVAILABILITY	AP-9
SPECIFICATIONS	SP-1
INDEX	IN-1

FOREWORD

A Word to FCV-1150 Owners

Congratulations on your choice of the FURUNO FCV-1150 Color LCD Sounder. We are confident you will see why the FURUNO name has become synonymous with quality and reliability.

Since 1948, FURUNO Electric Company has enjoyed an enviable reputation for innovative and dependable marine electronics equipment. This dedication to excellence is furthered by our extensive global network of agents and dealers.

This equipment is designed and constructed to meet the rigorous demands of the marine environment. However, no machine can perform its intended function unless installed, operated and maintained properly. Please carefully read and follow the recommended procedures for operation and maintenance.

We would appreciate hearing from you, the end-user, about whether we are achieving our purposes.

Thank you for considering and purchasing FURUNO equipment.

Features

The FURUNO FCV-1150 is a dual frequency Color LCD Sounder. Comprised of a display unit and a transducer, the FCV-1150 displays underwater conditions on a 12.1-inch color LCD in various colors according to echo strength.

The main features of the FCV-1150 are

- FURUNO Free Synthesizer (FFS) transceiver design allows use of user-selectable operating frequencies.
- Bright LCD gives excellent readability even in broad daylight.
- 64-color (including background) presentation provides detailed information on fish density and bottom composition.
- Automatic operation selects correct range and gain to show fish echoes and bottom in both shallow and deep waters.
- In addition to the conventional gain setting, Gain may be applied to the whole display.
- Alarms: Bottom, Fish (bottom lock and normal), Speed*, Water Temperature*, and Arrival*.
- Edge function of white marker traces the bottom contour with a thin white line.
- Zero line may be removed to look for fish near the surface.
- Accu Fish provides at-a-glance recognition of fish size, with fish symbols and size or depth indication. (Available with transducer 50/200-1T.)
- Heaving compensation for stable picture always.*
- User-programmable nav data displays provide analog and digital nav data.
- Waypoints (up to 20) for marking important locations.
- Destination waypoint feature provides range, bearing and time-to-go to destination waypoint.

* Requires appropriate sensor.

TFT LCD

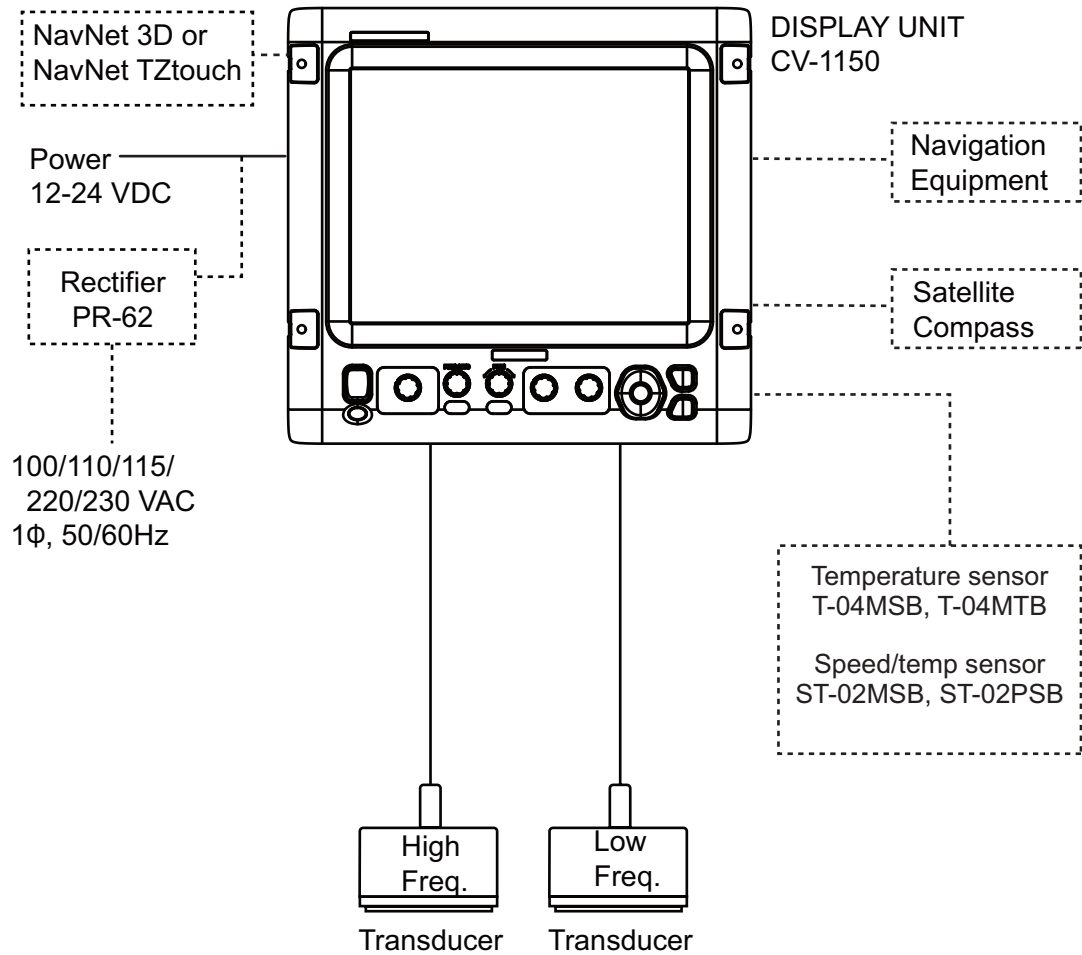
The display device employs a high quality TFT LCD which displays better than 99.99% of its pixels. The remaining pixels may drop out or light, however this is not an indication of malfunction.

CE declaration

With regards to CE declarations, please refer to our website (www.furuno.com) for further information about RoHS conformity declarations.

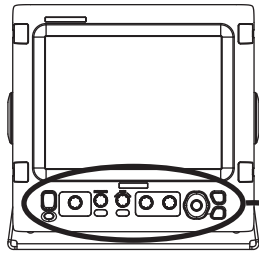
SYSTEM CONFIGURATION

Basic configuration is shown with a solid line.



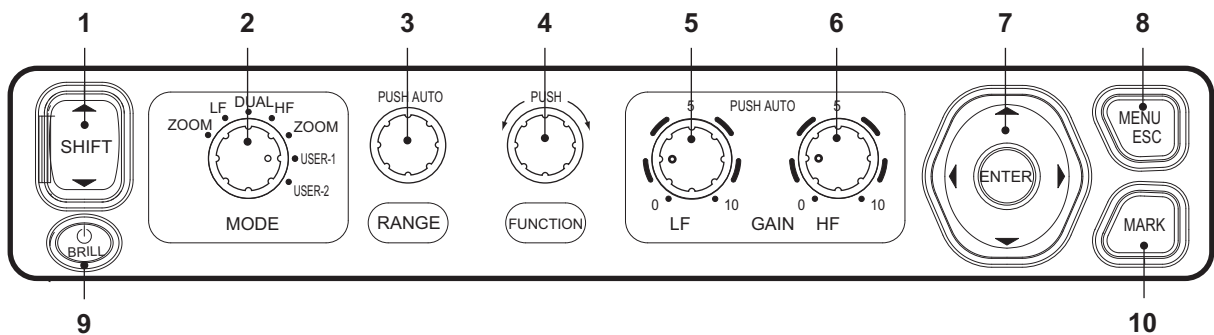
1. OPERATION

1.1 Control Description



HOW TO REMOVE THE HARD COVER

While pressing the center of the cover with your thumbs as illustrated, pull the cover towards you.



No.	Control	Function
1	▲ SHIFT ▼	Shift the display range. (Inoperative when auto range or auto shift is active.)
2	MODE	Select display mode.
3	RANGE	Push: Show the auto range setting window. Rotate: Manually select range. (Inoperative when auto range is active.)
4	FUNCTION	Long push: Display function key setting window. Momentary push: Display window programmed. Rotate: Select item in setting window.
5, 6	GAIN HF, GAIN LF	Push: Display high or low frequency auto gain setting window. Rotate: Manually adjust gain. (Inoperative when auto gain is active.)
7	ENTER ▲▼◀▶ (Cursor pad)	<ul style="list-style-type: none"> Select items on menus. Change settings Move VRM. Push ENTER key to confirm setting.
8	MENU/ESC	<ul style="list-style-type: none"> Open/close menu. Escape from current operation.
9	🔌/BRILL	<ul style="list-style-type: none"> Turn power on (momentary push) and off (long push). Open display brilliance setting window, with power turned on.
10	MARK	Record position of an important echo as a waypoint. (Output latitude and longitude position to a chart plotter if connected.)

1. OPERATION

1.2 Power On/Off

Press the **⏻/BRILL** key to turn on the power. The unit beeps, the startup screen appears and then the last-used display is shown.

To turn off the power, press the **⏻/BRILL** key more than three seconds. The time remaining until power off is counted down on the screen.

Note: After turning the power off, wait approximately 10 seconds before turning the power on again.



1.3 Adjusting Display Brilliance

1. With the equipment powered, press the **⏻/BRILL** key momentarily to show the brilliance adjustment window.



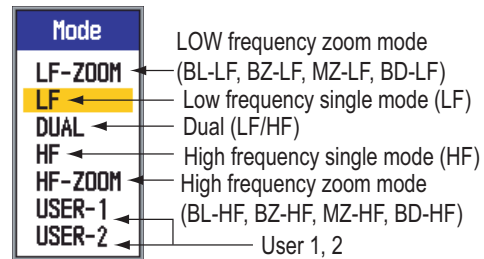
2. Press the **⏻/BRILL** key to adjust brilliance. Continuous pressing changes the brilliance cyclically. (0→1→...→9→8→...→0→1→...). "0" is the lowest and "9" is the highest. You can also use **◀** or **▶** for the adjustment.
3. Press the **ENTER** or **MENU/ESC** key to save the setting and close the window. (The window is automatically closed if the brilliance is not adjusted within approx. six seconds.)

1.4 Selecting a Display

The FCV-1150 has seven display modes: low frequency display, high frequency display, dual frequency display, low frequency+zoom, high frequency+zoom, user 1 display, and user 2 display. Select one with the **MODE** control as shown in the procedure below.

Note: This function is inoperative if Gain/Mode on the Navnet menu is set for NavNet. See 1.20.6 for details.

1. Rotate the **MODE** control to open the mode selection window.



() : Mode indication at the top of the screen
 BL: Bottom Lock LF: Low Frequency
 BZ: Bottom Zoom HF: High Frequency
 MZ: Marker Zoom BD: Bottom Discrimination

2. Rotate the **MODE** control to select a display.

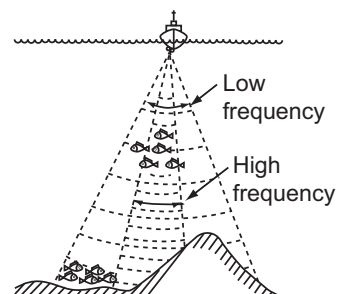
1.4.1 Single frequency display

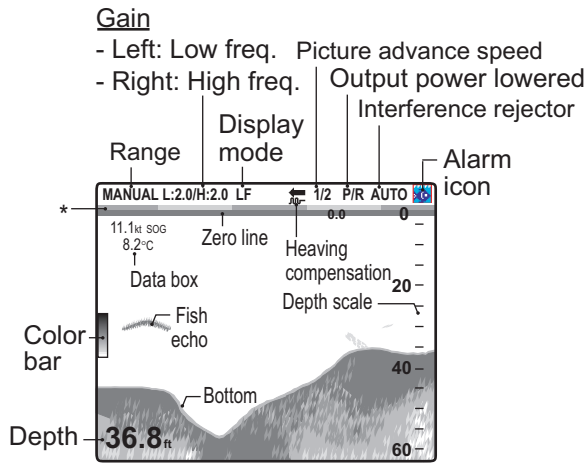
Low frequency

The lower the frequency of the ultrasonic signal, the wider the detection area. Therefore, the high frequency is useful for general detection and judging bottom condition.

High frequency

The higher the frequency of the ultrasonic signal, the better the resolution. For this reason the low frequency is ideal for detailed observation of fish schools.

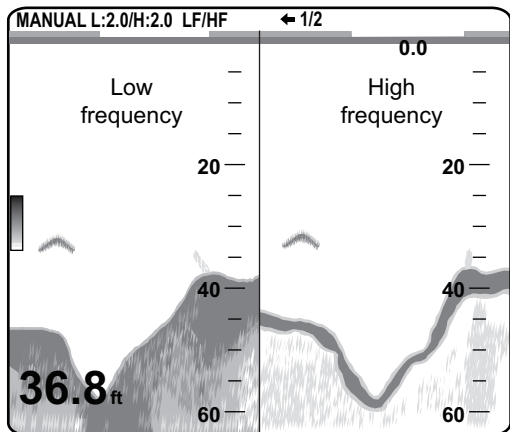




*Minute marker (two different color bars in 1 min.)

1.4.2 Dual frequency display

The low frequency picture appears on the left; the high frequency picture on the right. This display is useful for comparing underwater conditions with two different frequencies.



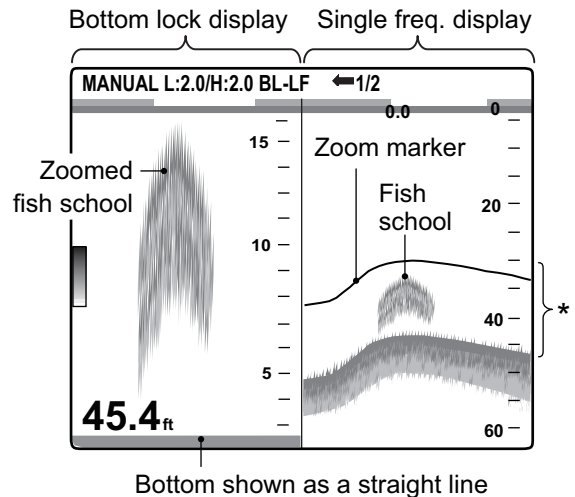
Freq. (kHz)	Beamwidth	Resolution	Detection range	Bottom tail
50	Wide	Low	Deep	Long
200	Narrow	High	Shallow	Short

1.4.3 Zoom display

Zoom mode expands chosen area of the single frequency picture. Five modes are available: bottom lock, bottom zoom, marker zoom and two bottom discrimination modes. The default mode is bottom lock. You can preset the zoom mode to use on the Sounder menu.

Bottom lock display

The bottom lock display provides a normal picture on the right half of the screen and a 16-600 feet (default: 16 feet) wide layer in contact with the bottom is expanded onto the left half of the screen. This mode is useful for detecting bottom fish.



Bottom shown as a straight line

*This area zoomed and displayed on left half of screen.

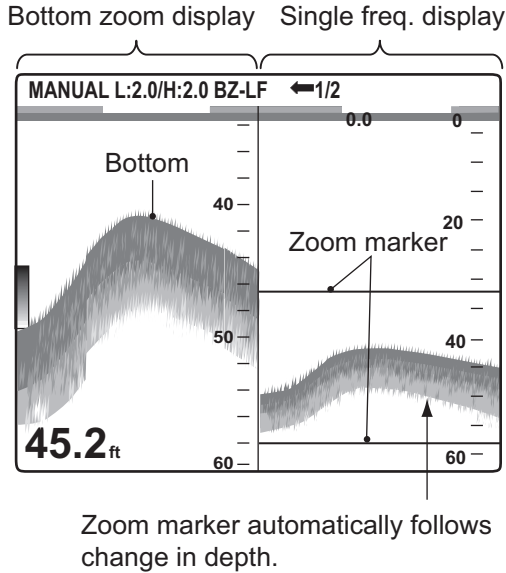
Note 1: The range of the zoom display can be adjusted on the Range menu.

Note 2: The zoom marker can be turned on or off on the Display menu.

1. OPERATION

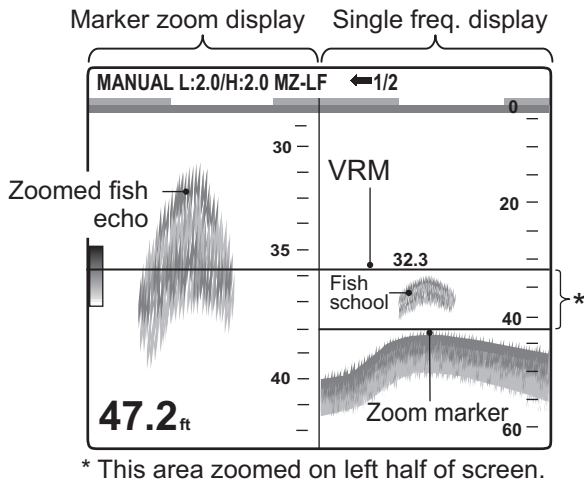
Bottom zoom display

This mode expands bottom and bottom fish on the left-half window, and is useful for determining bottom contour. When the bottom depth increases, the display automatically shifts to keep the bottom echo at the lower part of the screen.



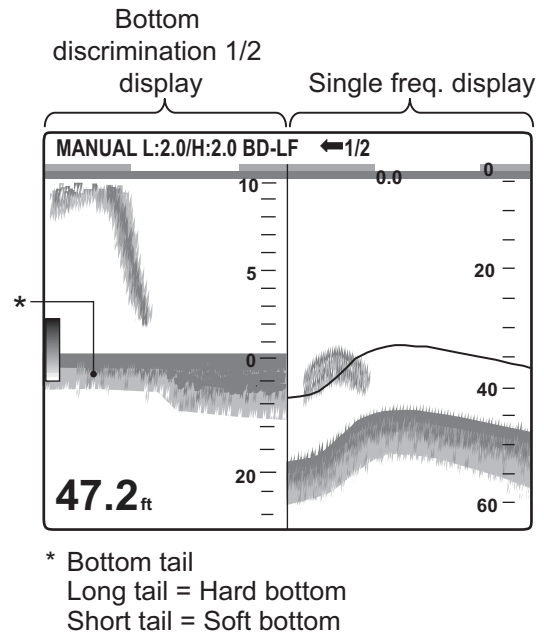
Marker zoom display

This mode expands chosen area of the normal picture to full vertical size of the screen on the left-half window. You may specify the portion to expand by operating the VRM (Variable Range Marker), which you can shift with ▲ or ▼. The area between the VRM and zoom marker is expanded. This mode is useful for determining the size of fish in the middle water.



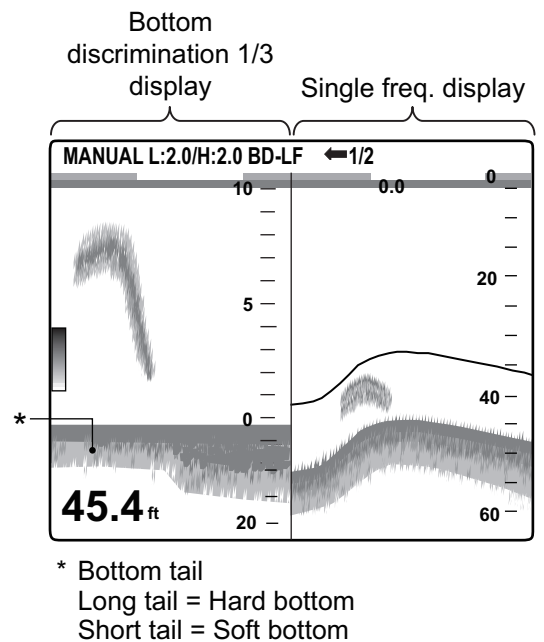
Bottom discrimination 1/2 display

The bottom discrimination 1/2 screen shows the single picture on the right half of the screen and the bottom discrimination display occupies the left half of the screen. The bottom discrimination display shows the bottom as a straight line, which is useful for determining bottom hardness.



Bottom discrimination 1/3 display

This display is similar to the bottom discrimination 1/2 display except the bottom discriminator display occupies the bottom one-third of the left half of the screen as below.

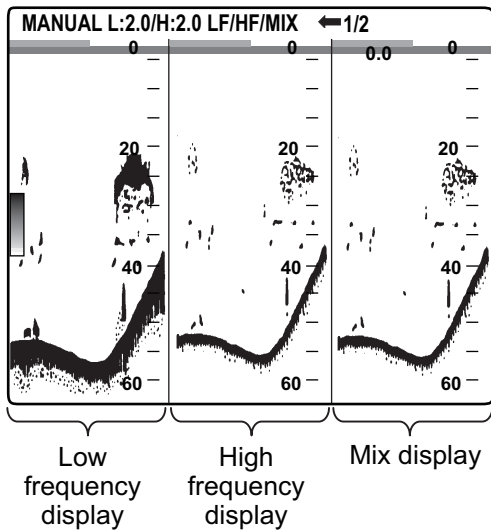


1.4.4 User 1 and 2 displays

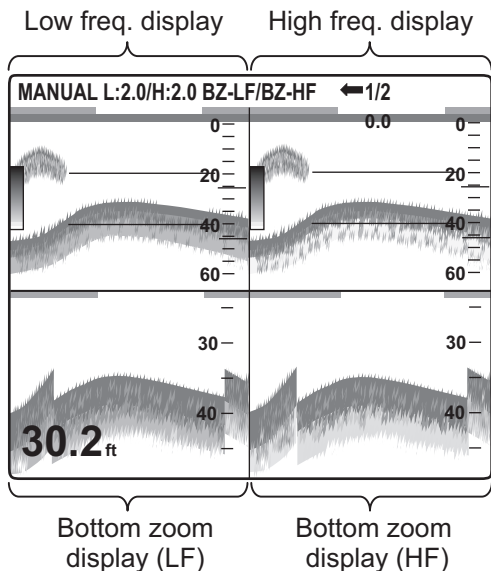
The user displays let you customize displays as desired. Two displays are provided and the default settings for each are

User 1 display: This screen is split vertically three ways and is comprised of LF, HF and MIX displays.

User 2 display: This display is split in fourths and is comprised of LF, HF, LF bottom zoom and HF bottom zoom displays.



Default user 1 display



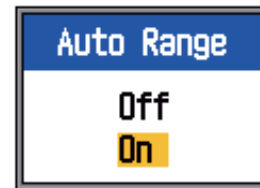
Default user 2 display

1.5 Selecting a Range

1.5.1 Range adjustment method

Range can be adjusted manually or automatically. Automatic adjustment is useful when you are preoccupied with other tasks and do not have the time to adjust the display.

1. Push the **RANGE** control to open the auto range setting window.



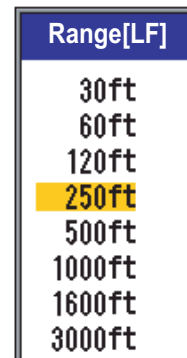
2. Use ▲ or ▼ to select Off or On as appropriate.

On: The range is automatically changed to keep the bottom echo on the lower half of the screen. Range shift and gain are inoperative in the Auto mode. "AUTO_R" is shown at the top left corner on the screen.

Off: The range may be chosen from eight basic ranges. MANUAL is shown at the top left corner on the screen.

1.5.2 Manual range adjustment

1. Rotate the **RANGE** control to show the range selection window.



Note: If you are using the dual frequency display, and are set up for independent range adjustment, push the **RANGE** control to switch between low and high frequencies alternately. For details see Split Range on page 31.

1. OPERATION

2. Rotate the **RANGE** control to select a range. The default ranges are as shown in the table.

Unit	Basic Range No, Range			
	1	2	3	4
m	10	20	40	80
ft	30	60	120	250
fa	5	10	20	40
HR*	6	12	25	50
pb	6	12	25	50
	5	6	7	8
m	150	300	500	1000
ft	500	1000	1600	3000
fa	80	160	250	600
HR*	100	200	300	600
pb	100	200	300	600

* HR is Hiro, Japanese unit of depth measurement.

3. Press the **ENTER** key.

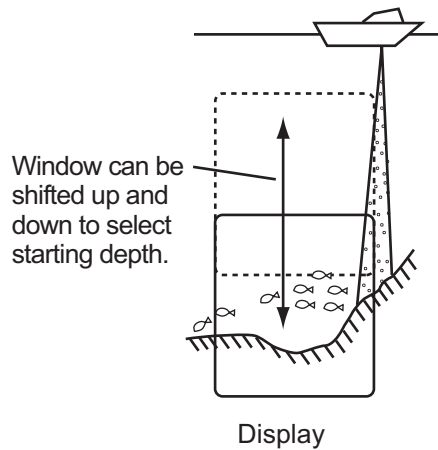
Note 1: Basic ranges may be preset as desired, on the Range menu.

Note 2: The range mode indication (AUTO or MANUAL), which appears at the top-left corner, may be turned on or off with Header Info in the Display menu.

Note 3: In the dual frequency display, the range for the low and high frequencies can be adjusted mutually or independently. Turn on Split Range in the Range menu to enable independent adjustment.

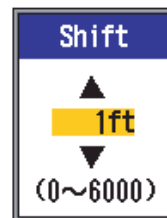
1.6 Shifting the Range

The basic range and range shifting functions used together give you the means to select the depth you can see on the screen. The basic range can be thought of as providing a "window" into the water column and range shifting as moving the "window" to the desired depth.



Note: This function is inoperative when the Auto mode is active.

1. Press **▲** or **▼** on the **SHIFT** key to show the Shift setting window.



2. Use **▲** or **▼** on the **SHIFT** key to select the amount of shift desired.
3. Press the **MENU/ESC** key to close the window, or wait six seconds to automatically close it.

Note 1: The bottom echo may be lost if the amount of shift is greater than actual depth.

Note 2: "Auto Shift," which can be turned on from the Sounder menu, automatically shifts the range to keep the bottom echo on the screen.

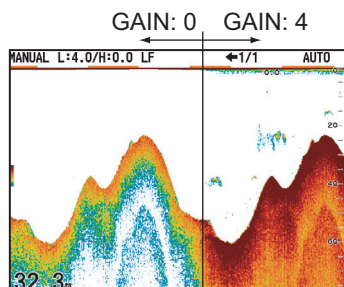
Note 3: You can set the shift value for each range independently, by turning on Free Shift in the Sounder menu.

1.7 Adjusting the Gain

The gain may be adjusted automatically (Fishing or Cruising) or manually. In automatic operation, the gain is automatically adjusted to display the bottom echo in reddish brown. If you need to lower the gain in automatic operation, use the gain offset feature. For manual adjustment, see paragraph 1.7.2.

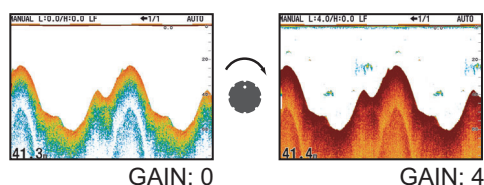
The Gain Area setting on the Sounder menu determines how gain is adjusted. For setting details, see Gain Area on page 22.

The "Normal" setting is the conventional gain adjustment method; the gain setting affects only current echoes.



Gain Area setting: "Normal"

The "All" setting applies gain to both current and past echoes.



Gain Area setting: "All"

1.7.1 Selecting gain adjustment method

1. Press the **GAIN-H** (for HF) or **GAIN-L** (for LF) control to open the Auto Gain setting window.



2. Use ▲ or ▼ to select Fishing, Cruising or Off as appropriate.

Fishing: This mode clearly displays weaker echoes and is for searching fish schools. "H (L):AF" is shown at the top left corner on the screen.

Cruising: This mode clearly displays stronger echoes (for example, bottom) and suppresses weak echoes. Use it for general cruising. "H (L):AC" is shown at the top left corner on the screen.

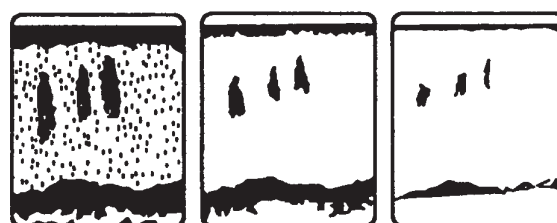
Off: Select to manually adjust gain.

3. For automatic operation (Fishing or Cruising), use the auto gain offset (range: -5 to +5) with ◀ or ▶.
4. Press the **ENTER** key.

1.7.2 Manual gain adjustment

The **GAIN HF** and **GAIN LF** controls adjust the sensitivity of the receiver. The setting range is 0.0 to 10, and the current setting is shown at the top of the screen as H (or L) + XX (setting value).

Generally, use a higher setting for deep waters and a lower setting for shallow waters. In any case, adjust the controls so that a slight amount of noise remains on the screen.



Gain too high

Gain proper

Gain too low



CAUTION

Adjust the gain properly. Incorrect gain may give wrong depth indication, which could result in grounding if the vessel is steered according to the depth indication.

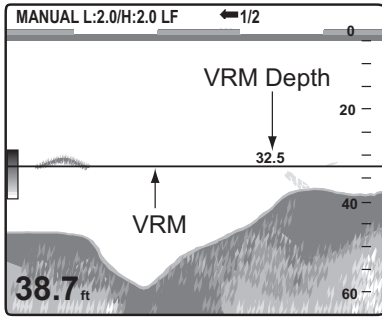
Note: This function is inoperative if Gain/Mode on the Navnet menu is set for NavNet. See 1.20.6 for details.

1. OPERATION

1.8 Measuring Depth

The VRM (Variable Range Marker) measures the depth to fish schools, etc.

1. Use ▲ or ▼ to place the VRM on the object to measure depth.
2. Read the VRM depth just above the VRM.

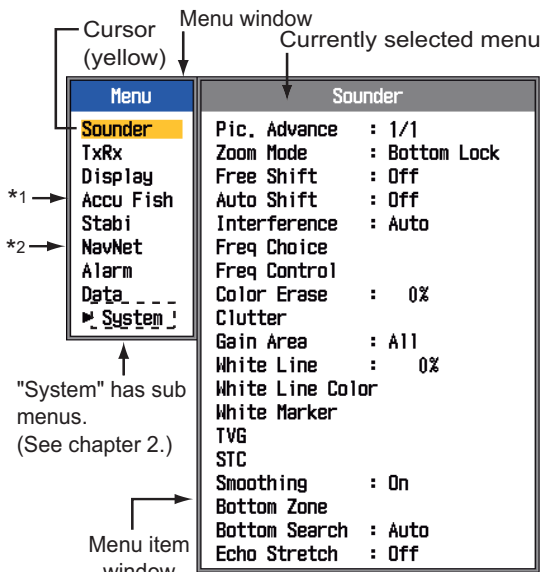


1.9 Menu Operating Procedure

The FCV-1150 has nine menus: Sounder, Tx-Rx, Display, Accu Fish, Stabi(lizer), NavNet, Alarm, Data, and System (with nine sub menus).

Below is the basic menu operating procedure.

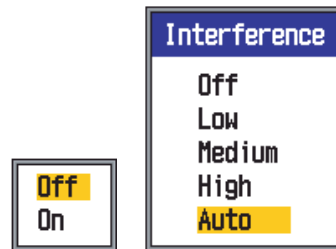
1. Press the **MENU/ESC** key to open the menu.



*1 Displayed with connection of transducer 50/200-1T.

*2 Displayed with connection of NavNet 3D.

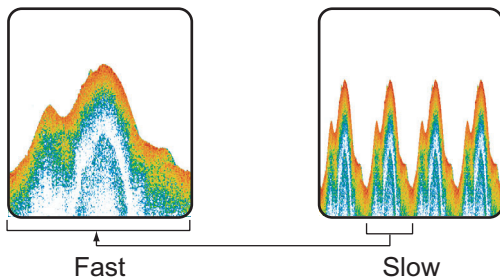
2. Use ▲ or ▼ to select a menu. The cursor (yellow) highlights current selection. The items in the right window change with menu selected.
3. Press the **ENTER** key to send the cursor to the menu item window. (Alternatively, you can press ►.) The cursor (yellow) shifts to the menu item window (right) and the color of the bar at the top of the menu item window changes from gray to blue to indicate that the menu item window is active.
4. Use ▲ or ▼ to select a menu item and press the **ENTER** key. The menu item's setting box or setting window appears.



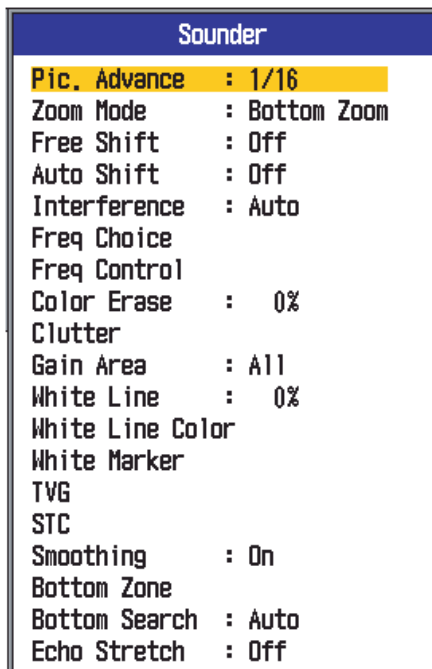
5. Use ▲ or ▼ to select an option.
6. Press the **ENTER** key to save the setting. The setting box or window disappears. To escape without changing setting, press the **MENU/ESC** key instead of the **ENTER** key.
7. To select another menu, press the **MENU/ESC** key. The cursor (yellow) moves to the menu window. You can also use ◀ to move the cursor.
8. Press the **MENU/ESC** key to close the menu. (Several presses may be necessary.)

1.10 Picture Advance Speed

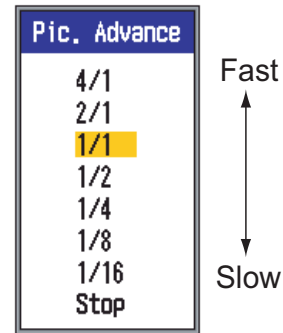
The picture advance speed determines how quickly the vertical scan lines run across the screen. When choosing a picture advance speed, keep in mind that a fast advance speed will expand echoes horizontally on the screen and a slow advance speed will contract them. A fast advance speed is useful for observing the rugged bottom closely. A slow advance speed is useful for observing the smooth bottom.



1. Press the **MENU/ESC** key to open the menu.
2. Use **▲** or **▼** to select Sounder and press the **ENTER** key.



3. Use **▲** to select Pic. Advance and press the **ENTER** key.



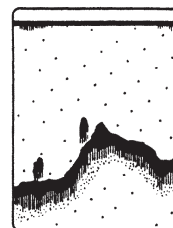
4. Use **▲** or **▼** to select picture advance speed desired and press the **ENTER** key. The fractions in the window indicate the number of scan lines produced per transmission. 1/16 is the slowest speed and 4/1 is the fastest speed. 1/16 means one scan line is produced every 16 transmissions. "Stop" freezes the display and is useful for taking a photo of the display.
5. Press the **MENU/ESC** key twice to finish.

⚠ CAUTION

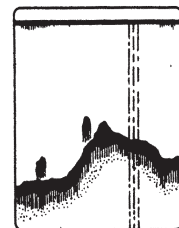
Neither the picture nor the depth indication is updated and when the picture is stopped. For those reasons, do not steer the vessel while monitoring the picture/depth indication when the picture is stopped.

1.11 Rejecting Interference

Interference from other acoustic equipment operating nearby or other electronic equipment on your boat may show itself on the display as shown in the figure below. When this occurs use the interference rejector.



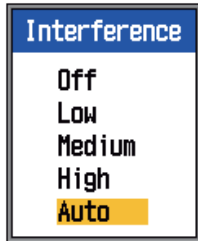
Interference from other sounder



Electrical interference

1. OPERATION

1. Press the **MENU/ESC** key to open the menu.
2. Use **▲** or **▼** to select Sounder and press the **ENTER** key.
3. Use **▲** or **▼** to select Interference and press the **ENTER** key.



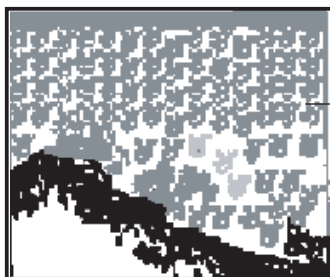
4. Use **▲** or **▼** to turn the interference rejector on or off and press the **ENTER** key.
Off: Turn off the interference rejector.
Low, Medium, High: High provides the greatest degree of suppression and Low provides the weakest.
Auto: Automatically reject interference.
5. Press the **MENU/ESC** key twice to close the window.

IMPORTANT

Turn off the interference rejector when no interference exists, so as not to miss small echoes.

1.12 Erasing Weak Echoes

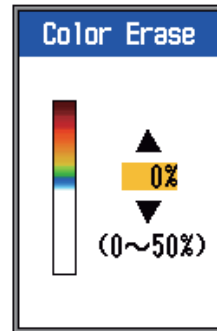
Sediment in the water or reflections from plankton may be painted on the display in low intensity tones, as shown in the illustration below. You can remove these unwanted echoes with the Color Erase feature.



Weak echoes

1. Press the **MENU/ESC** key to open the menu.

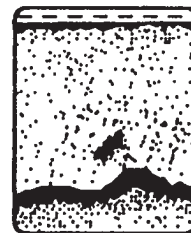
2. Use **▲** or **▼** to select Sounder and press the **ENTER** key.
3. Use **▲** or **▼** to select Color Erase and press the **ENTER** key.



4. Use **▲** or **▼** to select the color to erase and press the **ENTER** key. The setting range is 0 to 50(%), in intervals of 5(%). The larger the setting value, the greater the number of colors that are erased.
5. Press the **MENU/ESC** key twice to close the menu.

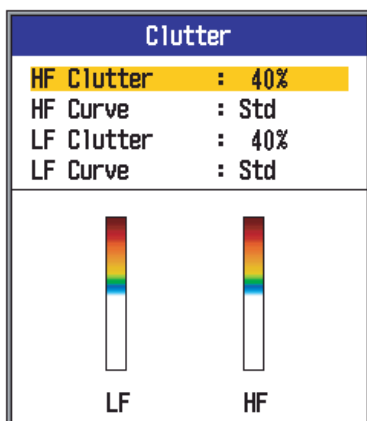
1.13 Rejecting Clutter

Low intensity "speckles" may appear over most of screen. This is mainly due to sediment in the water or noise. These unwanted echoes can be rejected, when using the manual mode, by adjusting Clutter on the menu. Clutter is automatically adjusted in the auto gain mode.

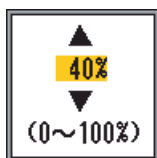


1. Press the **MENU/ESC** key to open the menu.
2. Use **▲** or **▼** to select Sounder and press the **ENTER** key.

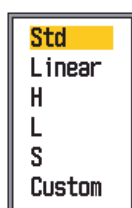
- Use ▲ or ▼ to select Clutter and press the **ENTER** key.



- Use ▲ or ▼ to select HF Clutter or LF Clutter as applicable and press the **ENTER** key.



- Use ▲ or ▼ to set clutter level and press the [ENTER] key. The setting range is 0-100(%), in intervals of 10(%). The larger the setting, the greater the degree of clutter rejection.
- Use ▲ or ▼ to select HF Curve or LF Curve as applicable and press the **ENTER** key. The setting box shown below appears.



Std: Strong color echoes are displayed as is and weak color echoes are shown smaller, when the clutter level setting is raised.

Linear: All echoes are displayed smaller, when the clutter level setting is raised.

H: Show individual fish.

L: Show small targets such as plankton.

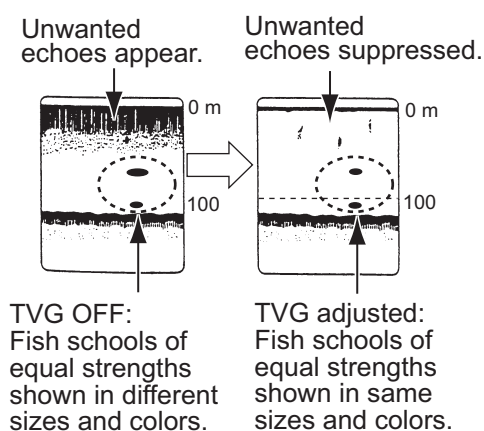
S: Display large individual fish located between the surface and midwater.

Custom: Emphasize strong-to-medium strength echoes. See User Clutter on page 30.

- Use ▲ or ▼ to select setting desired and press the **ENTER** key.
- Press the **MENU/ESC** key several times to close the window.

1.14 Adjusting TVG

A fish school at a deep depth is displayed in weak colors even if it is equal in strength to one in shallow waters. This is due to propagation attenuation of the ultrasonic wave. To compensate for this difference, use TVG. TVG automatically adjusts the gain with depth so that echoes of the same strength and different depths are shown in the same colors regardless of their depths. The gain is increased with depth to display echoes of equal strengths in the same colors. In the figure below, for example, the TVG is set for 100 m and the TVG level is adjusted. Then, unwanted echoes at a distance less than 100 m are deleted and echoes at depths greater than 100 m are not affected.



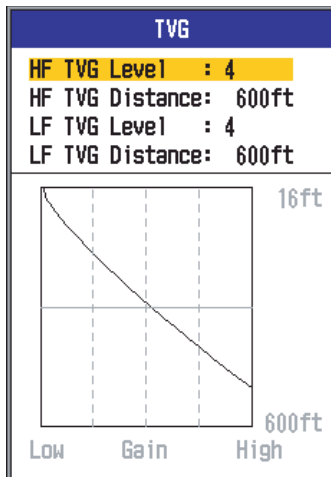
IMPORTANT

Do not set the TVG too high; close-range echoes may not be displayed. Carefully adjust the TVG while observing the display.

- Press the **MENU/ESC** key to open the menu.
- Use ▲ or ▼ to select Sounder and press the **ENTER** key.

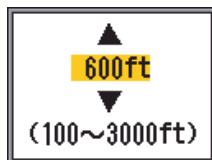
1. OPERATION

- Use ▲ or ▼ to select TVG and press the **ENTER** key.



Default setting for FUNCTION control

- Use ▲ or ▼ to select HF TVG Distance or LF TVG Distance as applicable and press the **ENTER** key.



- Use ▲ or ▼ to set TVG distance.
100-1500 ft: 10 ft intervals
1500-3000 ft: 50 ft intervals
- Press the **ENTER** key. The distance setting value in the TVG window changes to the one you set.
- Use ▲ or ▼ to select HF TVG Level or LF TVG Level as applicable and press the **ENTER** key.



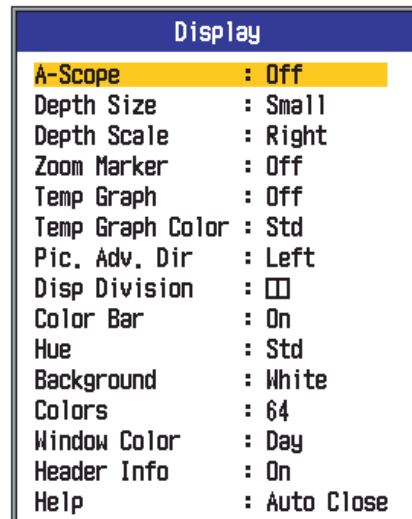
- Use ▲ or ▼ to set TVG level and press the **ENTER** key. The higher the level the less the gain at near distance.
- Press the **MENU/ESC** key several times to close the window.

1.15 A-scope Display

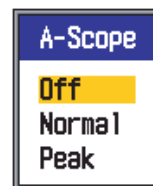
This display shows echoes at each transmission with amplitudes and tone proportional to their intensities, on the right side of the screen. It is useful for estimating the type of fish school and bottom composition.

Note: In the horizontal split dual frequency display the a-scope display appears on both high and low frequency displays. In the vertical split dual frequency display the a-scope display only appears on the high frequency display.

- Press the **MENU/ESC** key to open the menu.
- Use ▲ or ▼ to select Display and press the **ENTER** key.

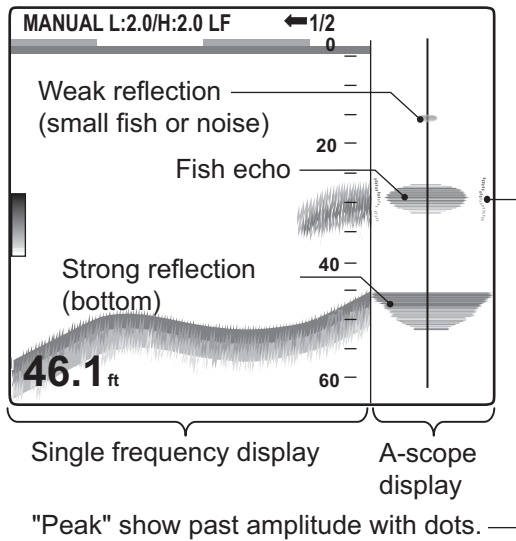


- Use ▲ to select A-Scope and press the **ENTER** key.



- Use ▲ or ▼ to select the A-scope presentation desired and press the **ENTER** key.
Normal: Display shows echoes at each transmission with amplitudes and tone proportional to their intensities.
Peak: "Normal" A-scope display plus peak-hold amplitude picture in dots for last five seconds.

5. Press the **MENU/ESC** key twice to close the window.










1.16 Alarms

The FCV-1150 has six conditions which generate both audio and visual alarms: bottom alarm, normal fish alarm, bottom lock fish alarm, water temperature alarm, speed alarm and arrival alarm. (The water temperature, speed and arrival alarms require appropriate sensors.) When an alarm is violated the audio and visual alarms are released. You can silence the buzzer with any key. The visual alarm (icon) remains on the screen until the cause of the alarm is removed or the alarm is disabled.

Alarm icon (flashing)

MANUAL L:2.0/H:2.0 LF ← 1/2

An alarm icon appears when an alarm has been violated.

-  : Bottom alarm
-  : Fish alarm (specific area)
-  : Fish alarm (all areas)
-  : Fish alarm (bottom lock)
-  : Temperature alarm (°F)
-  : Speed alarm
-  : Arrival alarm

Bottom alarm: The bottom alarm alerts you when the bottom (displayed in red or reddish brown echo) is within the alarm range set. To activate the bottom alarm the depth must be displayed.

Fish (normal) alarm: The fish (normal) alarm tells you when an echo above a certain strength (selectable) is within the preset alarm range or an echo of yellow color or stronger color is anywhere between the transducer and the bottom.

Fish (bottom lock) alarm: The fish (bottom lock) alarm sounds when fish are within a certain distance from the bottom. Note that the bottom lock and bottom discrimination (1/2 or 1/3) displays must be turned on to use this alarm.

Water temperature alarm: The water temperature alarm alerts you when the water temperature is within (inside alarm) the alarm range set or under/over (outside alarm) the range set.

Speed alarm: The speed alarm alerts you when the speed is within (inside alarm) or under/over (outside alarm) the preset speed.

Arrival alarm: The "Inside" arrival alarm alerts you when you approach to the destination waypoint by the distance set. Alternatively, the "Outside" arrival alarm alerts when your vessel travels a specific distance from the destination waypoint.

Activating an alarm

1. Press the **MENU/ESC** key to open the menu.
2. Use ▲ or ▼ to select Alarm and press the **ENTER** key.

Alarm

Bottom : Off

* { From : 0ft

 { Span : + 10ft

Fish(Normal) : Off

* { From : 0ft

 { Span : + 10ft

Fish(B/L) : Off

(Only at B/L Mode)

* { From : 0.0ft

 { Span : + 1.0ft

Fish Level : Medium

Temperature : Off

* { From : 65.0°F

 { Span : + 1.0°F

Speed : Off

* { From : 0.0kt

 { Span : + 1.0kt

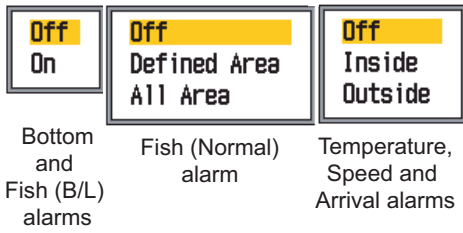
Arrival Alarm : Off

* { Radius : 0.01nm

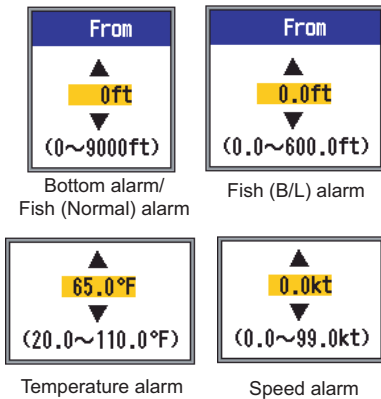
*: Value not adjustable when alarm is inactive.

1. OPERATION

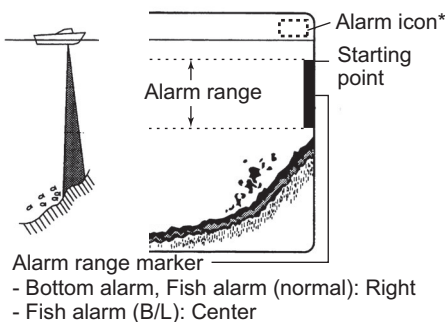
3. Use ▲ or ▼ to select an alarm and press the **ENTER** key.



4. Use ▲ or ▼ to select alarm type:
On: Bottom and Fish (B/L) alarms
Defined Area/All Area: Fish (Normal)
Inside/Outside: Temperature, Speed and Arrival alarms
Inside: Alarm generated when speed, water temperature or arrival distance is within the range set.
5. Press the **ENTER** key. For "All Area" Fish (Normal) alarm, go to step 13. For Arrival alarm, go to step 10.
6. Use ▲ to select From.
7. Press the **ENTER** key.



8. Use ▲ or ▼ to set starting depth, temperature or speed as appropriate and press the **ENTER** key. For Bottom and Fish (Normal), the starting depth is the range from the transducer, and for Fish (B/L), from the bottom.



9. Press the **ENTER** key.

10. Use ▲ to select Span (or Radius in case of Arrival) and press the **ENTER** key.
11. Use ▲ or ▼ to set the range of depth, temperature, speed or distance as appropriate. To shorten the alarm range marker, use ▲ and to lengthen it use ▼.
12. For the bottom alarm, temperature alarm, speed alarm or arrival alarm, press the [ENTER] key to finish, and then go to step 16. For a fish alarm, press the **ENTER** key and go to step 13.
13. Use ▼ to select Fish Level and press the **ENTER** key.



14. Use ▲ or ▼ to select the echo strength level which will trigger the fish alarm.
Weak: Light-blue or stronger echoes
Medium: Yellow or stronger echoes
Strong: Red and reddish-brown echoes
15. Press the **ENTER** key.
16. Press the **MENU/ESC** key twice to close the menu.

Note: To disable an alarm, select Off at step 4 in the above procedure.

1.17 FUNCTION Control

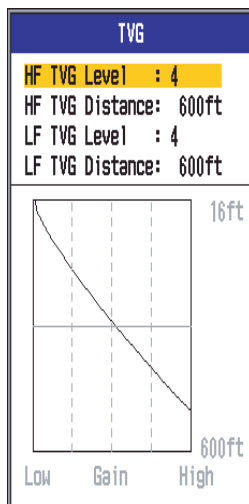
The **FUNCTION** control provides for instant display of a user-defined options window, chosen with "FUNC Key" on the Key menu. 14 items are available: Pic. Advance, Interference, Color Erase, Clutter, White Line, White Marker, TVG (default setting), STC, Bottom Zone, A-Scope, Split Range, Auto Shift, Freq Choice and Freq Control and Gain/Mode.

Note 1: "Gaom/Mode" is available when NavNet menu is set for NavNet.

Note 2: The **FUNCTION** control is automatically set to TVG when the [Gain/Mode] function is active and the NavNet connection is OFF.

1.17.1 Using the FUNCTION control

1. Press the **FUNCTION** control to open the setting window registered. (This window can also be opened by rotating the control.)

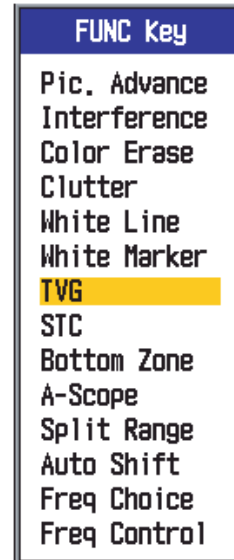


Default setting for FUNCTION control

2. Change setting as applicable.

1.17.2 Programming the FUNCTION control

1. Push and hold down the **FUNCTION** control until the FUNC key setting window appears.



2. Use ▲ or ▼ (or rotate the **FUNCTION** control) to select the item you want to program to the **FUNCTION** control.
3. Press the **ENTER** key or **FUNCTION** control to confirm your selection.

1.18 Waypoints

Waypoints are used to:

- Record the position of an important echo as a waypoint, and 20 points may be saved.
- Output a waypoint position to a chart plotter to mark position on its screen.
- Find range, bearing and time-to-go to a location (waypoint).

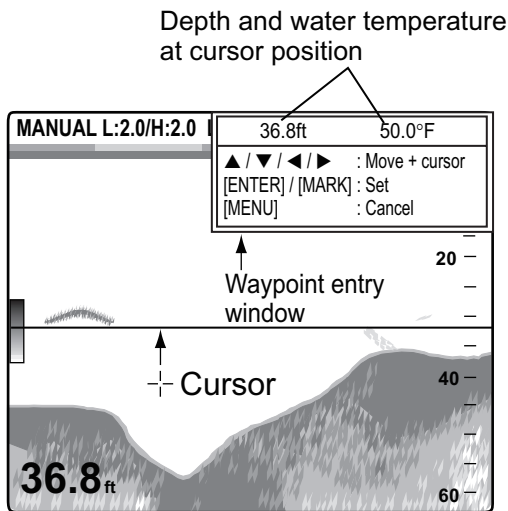
This feature requires position data, fed from a GPS navigator.

1.18.1 Entering a waypoint

There are two ways to enter a waypoint: enter it directly on the screen, or manually enter its latitude and longitude coordinates from the menu.

Entering a waypoint from the screen

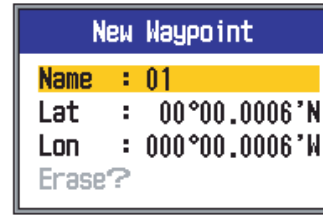
1. Press the **MARK** key. The cursor appears along with waypoint entry instructions. To enter a waypoint at current position, go to step 3.



Note: If there is no position data, the message "No position data" appears.

2. Use the Cursor pad to set the cursor where desired. Picture advancement is stopped until step 3 is completed, and the instruction window is integrated into the data box.
3. Press the **MARK** or the **ENTER** key to save the position. A red vertical line appears at the position. The waypoint is named automatically with the next sequential

waypoint number. If you want to change the waypoint name, go to step 4. Otherwise, go to step 6.



Note 1: When TLL or FURUNO-TLL is selected at TLL Output on the NMEA menu of the System menu, the latitude and longitude position at the cursor position is output to a chart plotter.

Note 2: Up to 20 waypoints can be registered. When you attempt to enter more than 20, the message "Already entered 20 waypoints. No more waypoint can be entered." appears. To enter another waypoint, delete an unnecessary waypoint, referring to section 1.18.3.

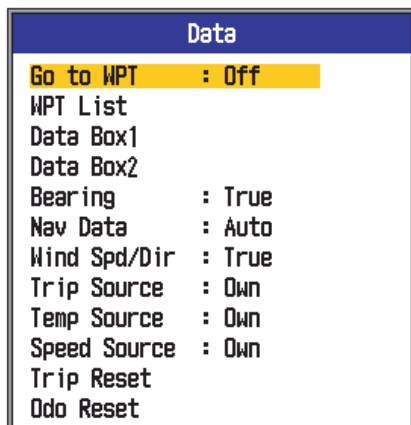
4. Press the **ENTER** key to open the waypoint name entry box.



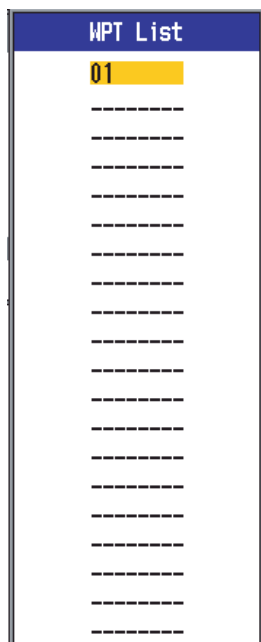
5. Enter the waypoint name (max. 8 characters) as follows:
 - 1) Use ▲ or ▼ to set character. Press ▲ to select character in order of 0→1→...→9→ - →A→...→Z→_ →0→... Use ▼ to select character reverse of that order.
 - 2) Use ▶ to shift the cursor.
 - 3) Repeat steps 1) and 2) to complete the name and finally press the **ENTER** key.
6. Press the **MENU/ESC** key to close the window.

Entering a waypoint by manual entry of position

1. Press the **MENU/ESC** key to open the menu.
2. Use ▲ or ▼ to select Data and press the **ENTER** key.



3. Use ▲ or ▼ to select WPT List and press the **ENTER** key.



4. Use ▲ or ▼ to select an empty waypoint and press the **ENTER** key. The waypoint setting window appears, showing current position in latitude and longitude.
5. Use ▲ or ▼ to select item desired and press the **ENTER** key.



For name



For L/L (ex. latitude)

6. Enter latitude and longitude, similar to how entered waypoint name.
7. Press the **MENU/ESC** key to register the waypoint.
8. Press the **MENU/ESC** key several times to close the window.

1.18.2 Editing waypoints

1. Press the **MENU/ESC** key to open the menu.
2. Use ▲ or ▼ to select Data and press the **ENTER** key.
3. Use ▲ or ▼ to select WPT List and press the **ENTER** key.
4. Use ▲ or ▼ to select the waypoint to edit and press the **ENTER** key. The waypoint setting window appears.
5. Use ▲ or ▼ to select the item to edit.
6. Edit item as appropriate.
7. Press the **MENU/ESC** key several times to close the window.

1.18.3 Erasing waypoints

A waypoint currently selected as destination waypoint cannot be erased.

1. Press the **MENU/ESC** key to open the menu.
2. Use ▲ or ▼ to select Data and press the **ENTER** key.
3. Use ▲ or ▼ to select WPT List and press the **ENTER** key.
4. Use ▲ or ▼ to select the waypoint to erase and press the **ENTER** key.
5. Use ▼ to select Erase? and press the **ENTER** key.
6. Use ▲ to select Yes and press the **ENTER** key.
7. Press the **MENU/ESC** key three times to close the window.

1. OPERATION

1.18.4 Setting destination waypoint

Set a destination waypoint to find range, bearing and time-to-go to that point. Range, bearing and time-to-go (to the waypoint) are shown on the nav data display.

1. Press the **MENU/ESC** key to open the menu.
2. Use ▲ or ▼ to select Data and press the **ENTER** key.
3. Use ▲ or ▼ to select Go To WPT and press the **ENTER** key.
4. Use ▲ or ▼ to select a waypoint and press the **ENTER** key.
5. Press the **MENU/ESC** key twice to close the window.

1.19 Fish Information (Accu Fish)

The Accu Fish feature, available with the transducer 50/200-1T, estimates fish length, displaying an appropriately sized fish symbol together with digital depth value or fish length. The information presented by this feature is intended for reference purposes only; it is not a completely accurate measurement of fish length.

1.19.1 Consideration for fish information

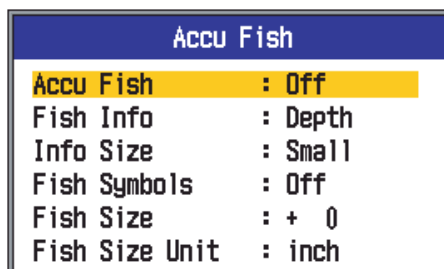
- If the indicated fish is different from the actual fish size, you can compensate for this on the Accu Fish menu.
- When Fish Symbols or Fish Info is enabled, 50 kHz and 200 kHz frequencies are transmitted alternately, even if a single frequency mode is in use.
- Fish within the zero line area are not measured.
- To reduce error, the detection area should be approx. 6 to 330 feet from the surface.

- This feature cannot be used with the inside-hull transducer since fish may not be detected depending on the transducer's frequency. Even if a fish is detected, the fish length indicated may be smaller than the actual length.
- In case of a fish school, echoes overlap one another, so the margin of error will be greater.
- The fish symbol indication is not shown when the bottom is not displayed on the screen.

1.19.2 Turning on Accu Fish

Accu Fish is inoperative when independent range selection is active.

1. Press the **MENU/ESC** key to open the menu.
2. Use ▲ or ▼ to select Accu Fish and press the **ENTER** key.



Accu Fish	
Accu Fish	: Off
Fish Info	: Depth
Info Size	: Small
Fish Symbols	: Off
Fish Size	: + 0
Fish Size Unit	: inch

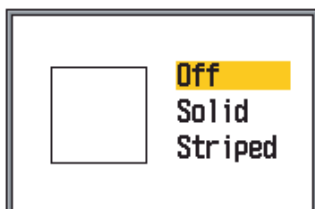
3. Use ▲ to select Accu Fish and press the **ENTER** key.







4. Use ▲ or ▼ to turn Accu Fish Off or On and press the **ENTER** key.
5. Press the **MENU/ESC** key twice to close the menu.

1.19.3 Displaying fish symbols

1. Press the **MENU/ESC** key to open the menu.
2. Use ▲ or ▼ to select Accu Fish and press the **ENTER** key.
3. Use ▲ or ▼ to select Fish Symbols and press the **ENTER** key.



4. Use ▲ or ▼ to select Off, Solid or Striped as applicable and press the **ENTER** key. The symbol size changes with fish size as shown in the table below.

Fish size	Solid	Striped
Large fish symbol (more than 50 cm, or more than 20 inches)		
Small fish symbol (10 to 49 cm, or 4 to 19 inches)		

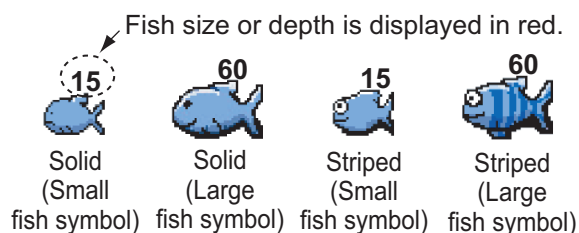
5. Press the **ENTER** key.
6. Press the **MENU/ESC** key twice to close the menu.

1.19.4 Displaying fish info

1. Press the **MENU/ESC** key to open the menu.
2. Use ▲ or ▼ to select Accu Fish and press the **ENTER** key.
3. Use ▲ or ▼ to select Fish Info and press the **ENTER** key.



4. Use ▲ or ▼ to select Fish Size or Depth as appropriate and press the **ENTER** key.



Note: You can show the fish info value alone (without fish symbol) by turning off Fish Symbols on the Accu Fish menu.

5. Press the **MENU/ESC** key twice to close the menu.

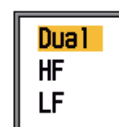
Note 1: Character size can be selected to large or small with Info Size.

Note 2: The unit of measurement can be selected to inch or cm with Fish Size Unit.

1.19.5 Selecting the display where to show the fish symbols

You can select “Dual”, “HF”, and “LF” display to show the fish symbol.

1. Press the **MENU/ESC** key to open the menu.
2. Use ▲ or ▼ to select Accu Fish and press the **ENTER** key.
3. Use ▲ or ▼ to select Symbols Area and press the **ENTER** key.



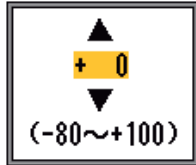
4. Press the **MENU/ESC** key twice to close the menu.

1. OPERATION

1.19.6 Applying offset to measured fish size

If the size of the fish caught differs greatly from the measured value, apply an offset to compensate for the difference.

1. Press the **MENU/ESC** key to open the menu.
2. Use ▲ or ▼ to select Accu Fish and press the **ENTER** key.
3. Use ▲ or ▼ to select Fish Size and press the **ENTER** key.
4. Use ▲ or ▼ to set compensation factor, referring to the table below for approximate settings.



Setting value	Amount of compensation
+100	2x
+50	1.5x
-50	1/2
-65	1/3
-75	1/4
-80	1/5

5. Press the **ENTER** key.
6. Press the **MENU/ESC** key twice to close the menu.

1.20 Menu Description

This section describes menu items not previously mentioned. For the System menu, see chapter 2.

1.20.1 Sounder menu

Sounder	
Pic. Advance	: 1/16
Zoom Mode	: Bottom Zoom
Free Shift	: Off
Auto Shift	: Off
Interference	: Auto
Freq Choice	
Freq Control	
Color Erase	: 0%
Clutter	
Gain Area	: All
White Line	: 0%
White Line Color	
White Marker	
TVG	
STC	
Smoothing	: On
Bottom Zone	
Bottom Search	: Auto
Echo Stretch	: Off

Zoom mode: Select the zoom display to show, among bottom lock, bottom zoom and marker zoom, when "zoom" is selected with the **MODE** control.

Note: This function is inoperative if Gain/Mode on the Navnet menu is set for NavNet. See 1.20.6 for details.

Free shift: Turn on/off independent range shift. Select **Off** to apply the same shift value to all ranges. To set range shift independently on each range, select **On**. The is feature is inoperative when auto range or auto shift is active.

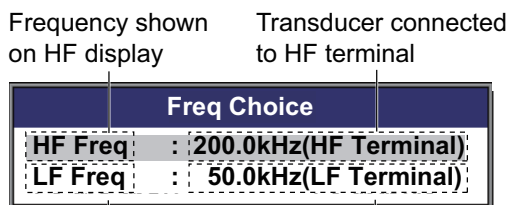
Auto shift: Turn the auto shift feature on or off. Select **Off** to shift the display manually (with ▲ or ▼). **On** automatically tracks the bottom echo to keep it on the bottom half of the display. For example, the distance to the bottom is 350 ft and the range is set to 0-60 ft. Then, auto shift automatically places the bottom echo on the display, without changing the range. "AUTO S" appears at the upper left corner when auto shift is active. ▲ and ▼ are inoperative when auto shift is active.

Note 1: Auto shift is inoperative when auto range is active.

Note 2: The bottom echo must be displayed in reddish brown or red in order for auto shift to function.

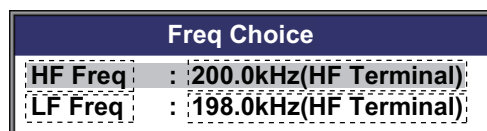
Freq. Choice: You can register up to four different frequencies for a single transducer, following the procedure in "Freq. Control" in the Sounder menu. Then, you select here the high and low frequencies to use. Note that Accu Fish must be turned off to use this feature.

1. Select Freq. Choice and press the **ENTER** key. The choices available depend on the transducers you have. The choices below are for 200 kHz (high frequency) and 50 kHz (low frequency).

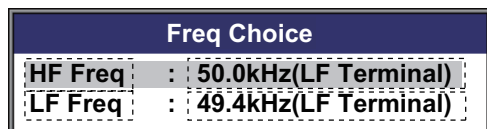


Frequency shown on LF display	Transducer connected to LF terminal

(1) 200 kHz trans. connected to HF terminal; 50 kHz trans. connected to LF terminal

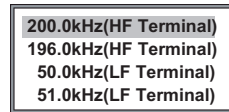


(2) 200 kHz trans. connected to HF terminal; no trans. connected to LF terminal



(3) 50 kHz trans. connected to LF terminal; no trans. connected to HF terminal

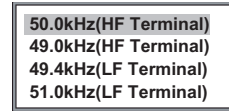
2. Use ▲ or ▼ to select HF Terminal or LF Terminal as appropriate and press the **ENTER** key. The frequencies preset with Freq Control are shown.



(1) Configuration



(2) Configuration



(3) Configuration

3. Use ▲ or ▼ to select applicable frequency and press the **ENTER** key. The picture for the frequency selected here is shown on the display.

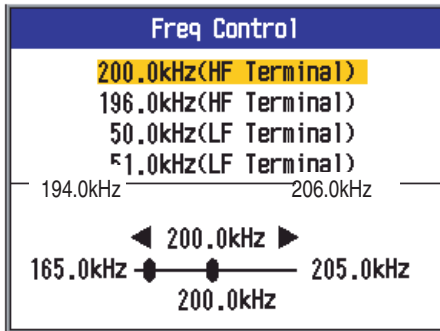
Freq Control: Four different transducer frequencies and frequency adjustment range are automatically set at installation. However, the range of frequency adjustment for each frequency may be different depending on installation characteristics. For example, for a 200 kHz frequency transducer, the default frequencies are 200 kHz, 196 kHz, 198 kHz and 204 kHz. If those frequencies are not suitable for your use, you can change them. Further, in case of a wide-bandwidth transducer, frequencies may be chosen from the available frequency range. This allows you to have multiple frequencies for a single transducer. For example, if you have the transducer 82B-35R, you can register frequencies between 66 kHz and 109 kHz. The frequencies registered here may be selected at Freq Choice in the Sounder menu.

Set transducer frequency keeping in mind these considerations.

- Set frequency which is suitable for detecting targeted fish.
- Shift frequency so as to reduce interference.
- Lower frequency to increase detection range.
- Raise frequency to improve resolution.

1. OPERATION

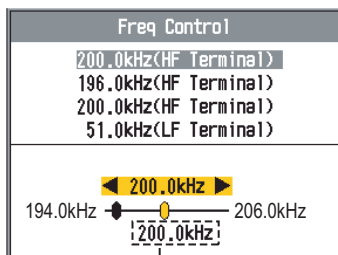
1. Choose Freq. Control and press the **ENTER** key. The contents of the setting window depend on your system configuration. In the example below, a 200 kHz transducer is connected to the HF terminal and a 50 kHz transducer is connected to the LF terminal.



2. Use **▲** or **▼** to select a frequency and press the **ENTER** key.



3. Use **▲** or **▼** to select a frequency terminal and press the **ENTER** key. To adjust the frequency of the transducer connected to the HF terminal, select HF terminal; select LF terminal to adjust the frequency of the transducer connected to the LF terminal.



Frequency set at installation

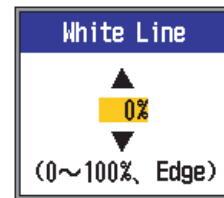
4. Use **◀** or **▶** to adjust the frequency. The adjustment range depends on the transducer connected.
5. Press the **ENTER** key.
6. To set another frequency, do steps 2-5 in this procedure.

Gain Area: Select how to apply gain. **All** applies gain to both past and current echoes. **Normal** applies gain to only the current echoes; past echoes are not affected. Note

that the current display is erased when changing this setting.

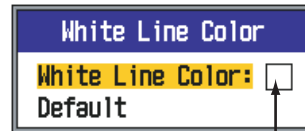
White Line: The white line helps you distinguish bottom fish from the bottom by tracing a line, in white or color desired, just above the bottom contour. This function is not only useful discriminating bottom fish but is also valuable for judging fish school density. The setting range is 0%-100%, in intervals of 10%. The higher the value the thicker the line.

Select White Line and press the **ENTER** key. Use **▲** or **▼** to set the width and press the **ENTER** key. The higher the figure, the wider the width of the line. The option "Edge" paints a very thin line above the bottom contour regardless of gain setting or display color.



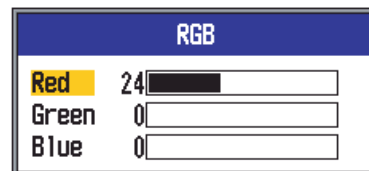
White Line Color: Choose the color for the white line.

1. Select White Line Color and press the **ENTER** key.



Current white line color

2. With White Line Color selected, press the **ENTER** key.

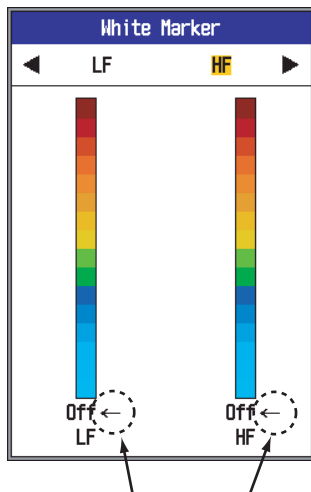


3. Use **▲** or **▼** to select the color to change.
4. Use **◀** or **▶** to adjust (range: 0-63) the color.
5. Set all colors as appropriate.
6. Press the **ENTER** key to finish.

To restore default white line settings, select Default at step 1 and press the **ENTER** key. Press **▲** to select Yes and press the **ENTER** key.

White Marker: Display a specific echo color in white. This feature is useful for emphasizing echoes having a specific strength.

1. Select White Marker and press the **ENTER** key.



Color selected with arrow is shown in white.

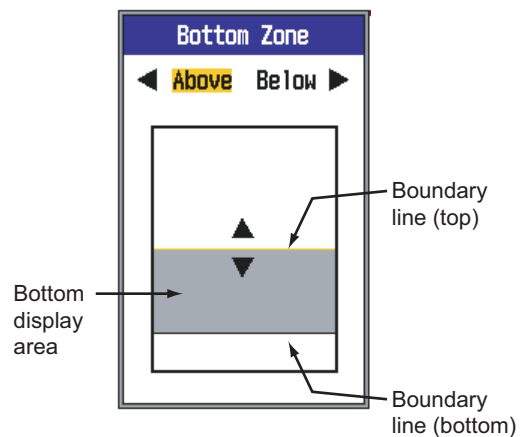
2. Use ◀ or ▶ to select high or low frequency as appropriate.
3. Use ▲ or ▼ to select the color to display in white. For example, to display the bottom echo in white, select the topmost color on the color bar.
4. Press the **ENTER** key.

STC: Delete unwanted echoes (plankton, air bubbles, etc.) near the surface. This is useful to clear the surface of unwanted echoes to look for surface fish. The setting range is 0-10, and 0 is Off. The larger the value the more surface echoes are erased. In setting 10, STC deletes unwanted echoes from the surface to about 16 ft. Avoid setting the STC too high; fish echoes near the surface may be erased.

Smoothing: If echoes appear like "patchwork," turn this feature on to smooth them.

Bottom Zone: Select the area where to show the bottom echo, when Auto Range is active.

1. Choose Bottom Zone and press the **ENTER** key.



2. Use ◀ or ▶ to select the boundary line to adjust.
3. Use ▲ or ▼ to adjust the boundary line.

Bottom Search: Select the frequency to use to detect depth when using the dual frequency display. The choices are **HF**, **LF**, and **Auto**. **Auto** gives priority to the high frequency which is giving the most accurate depth data.

Echo Stretch: Turn this feature on to stretch the tail of echoes. This is useful when you are trying to find individual fish within a layer of plankton.

1.20.2 Tx/Rx menu

TxRx	
Tx Power	: Auto
Tx Rate	: Max
[HF]	
Tx Pulse Edge	: Off
Tx Pulse	: Std
Pulse Length	: 0.05msec
Rx Band	: Std
[LF]	
Tx Pulse Edge	: Off
Tx Pulse	: Std
Pulse Length	: 0.05msec
Rx Band	: Std
Target Echo	: Normal

Tx Power: Interference may appear on the screen when an echo sounder having the same frequency as your own is being operated in the vicinity of your vessel. In this case, lower your Tx power and contact the vessel to request them to reduce their Tx power. Tx power is available in Off, Min, 1-10, and Auto. **Off** turns off transmission. **Min** sets minimum Tx power. **Auto** automatically adjusts Tx power. **1-10** sets desired Tx power; the higher the value the more the Tx power. When Tx power is reduced (Off, Min, 1-9), the indication "P/R" appears at the top of the display. Note that Auto is automatically selected when Accu Fish is active.

Tx Rate: Changes pulse repetition rate, in 20 levels. Normally, the highest rate (20) is used. When in shallow waters second reflection echoes may appear between surface and actual bottom echo. In this case, lower the Tx rate level. **Max** automatically changes the interval and pulse length with depth. **S** activates the ship's speed dependent mode, where the TX rate changes automatically with ship's speed. (Requires ship's speed input.)

Tx Pulse Edge (HF/LF): Turn on to suppress interference to other acoustic equipment (fish finders, scanning sonars, etc.), your own and others.

Tx Pulse (HF/LF): Pulse width changes according to range and shift values. When long range detection is your objective select a long pulse length. For better resolution, choose a shorter pulse. **Short 1** raises the detection

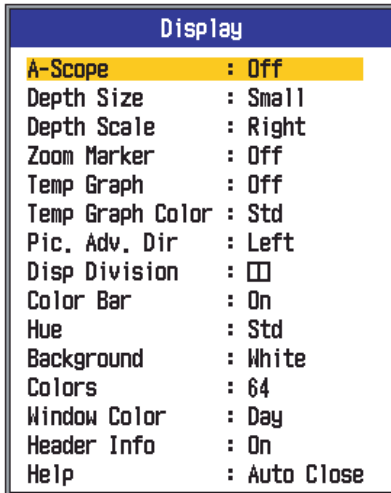
resolution, however, detection range is shorter (pulse length is about 1/4 of Std) than the Std setting. **Short 2** raises the detection resolution, however, detection range is shorter (pulse length is about 1/2 of Std) than the Std setting. **Std** is the standard pulse length, and is suitable for general use. **Long** Increases the detection range but lowers the resolution (about 1/2 compared to the Std pulse length). **Manual** enables manual setting of pulse length, at "Pulse Length."

Pulse Length (HF/LF): Operative when Manual is selected at Tx Pulse. A small value gives better detection resolution, however detection range is shorter. On the other hand, a large value gives better detection range but resolution is lower. The setting range is 0.05 - 5.0 (msec).

Rx Band (LF/HF): Rx bandwidth is automatically set according to Tx pulse length. Normally the **Std** position provides good performance. If noise is a problem switch to **Narrow**. For better resolution, select **Wide**.

Target Echo: Set fishing objective. **Normal** is for general purpose fishing. **Surface** is for detecting surface fish. Pulse repetition rate is higher than "Normal" on the 1kW and 2kW transducers that are programmed into the menu. **Squid** detects squid and other individual fish. These items are automatically set: Tx Pulse, Short 1; Echo Stretch, ON, and Smoothing, Off. **Deep Sea** is the same as Normal.

1.20.3 Display menu

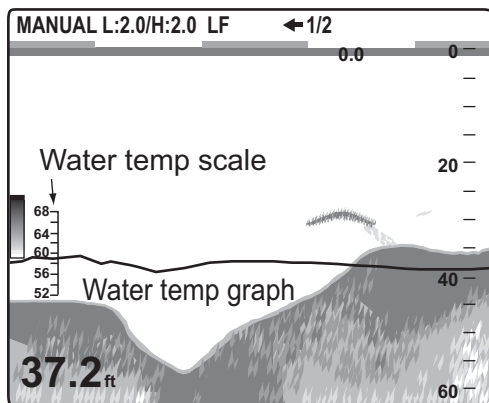


Depth Size: Change the size of the depth indication, to **Small**, **Middle** or **Large**. **Off** turns off the depth indication.

Depth Scale: Select where to display the depth scale, **Right** or **Center**. **Off** turns off the depth scale.

Zoom Marker: Turn the zoom marker on or off on the zoom displays.

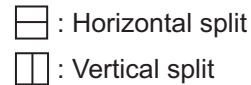
Temp Graph: Turn the temperature graph on or off and select graph range, from Narrow or Wide. **Narrow** is 16°F and **Wide** is 32°F.



Temp Graph Color: Select water temperature graph color, among standard, white, red, black, and yellow.

Pic Adv. Dir: Select picture advance direction. **Left** advances the picture right to left. **Right** advances the picture left to right. **L/R** advances the picture both leftward and rightward, starting from the center of the screen. (Left direction in single frequency display, horizontal split.)

Disp Division: Select display division in dual frequency and combination displays (zoom+normal). The choices are shown in the illustration below.



Color Bar: Turn the color bar on or off.

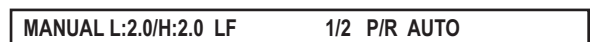
Hue: Change the color arrangement. The choices are Std, Hue1 thru Hue6, and Custom. As you move through the selections you can see the color arrangement at the right side of the screen.

Background: Change the background to suit your current environment. The choices are white, light blue, blue, dark blue, and black. This feature is inoperative when Hue is selected to Custom.

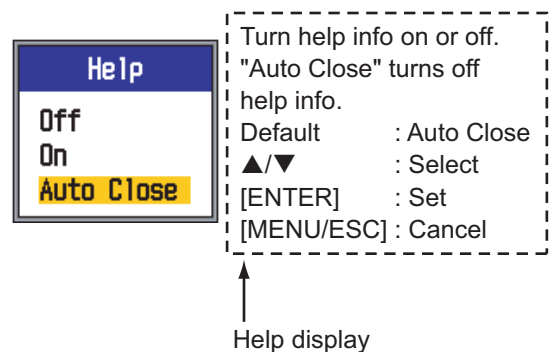
Colors: Select the number of colors to display. The choices are 8, 16, and 64.

Window Color: Select the background color for the menu window. **Day** is white background. **Night** is black background, with brilliance set to "2."

Header Info: Turn the header info on or off.



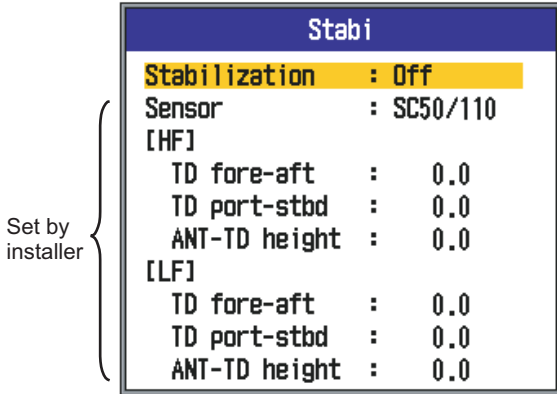
Help: Help turns the help display on or off. **Off** turns off help. **On** turns on help. **Auto Close** automatically closes the help display when there is no operation within six seconds.




1. OPERATION



1.20.4 Stabilizer menu

The Stabilizer menu compensates for the effects of heaving, and requires a satellite compass. It is inoperative when there is no data from the satellite compass and NMEA 0183 on the NMEA menu is selected to Special.



Stabilization: Turn heaving compensation on or off. Turn it on when seas are rough, to get stable pictures, regardless of sea conditions.

When turned on the symbol  appears at the top of the screen.

Stabi. Area: When heaving exceeds the value set here, stabilization is stopped and the stabilizer icon  at the top of the screen disappears. However, the heaving mode is kept "On". When heaving is once again less than the value set here, stabilization is restarted and the stabilizer icon  reappears.

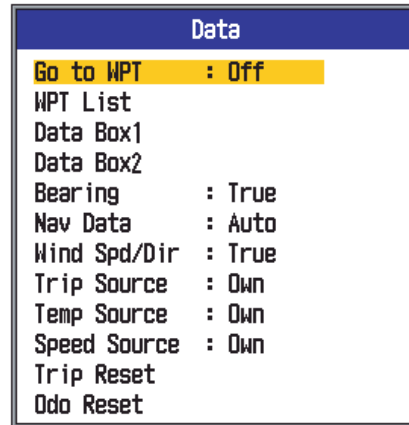
1. Press the MENU key to display the main menu.
2. Press ▼ or ▲ to select "Stabi" and then press the ENTER key.
3. Press ▲ or ▼ to select "Stabilization" and then press the ENTER key.
4. Press ▼ to select "On" and then press the ENTER key.
5. Press ▼ to select "Stabi. Area" and then press the ENTER key.



6. Press ▼ or ▲ to select desired Stabi. Area and then press the ENTER key.
7. Press the **MENU/ESC** key twice to close the menu.

1.20.5 Data menu

The Data menu sets up data received from external equipment.



Data Box1, Data Box2: Turn on to display data at the upper left corner on the display. If several data items are turned on, they are displayed alternately at the interval (default: 4 s) chosen with Switching Cycle. Data other than depth and "timer" require appropriate sensor.

Data box 1 information → **50.8**_{ft}
 Data box 2 information → **16.1**_{kt SOG}

1. Select Data Box1 and press the **ENTER** key.

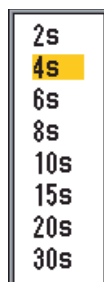
Data Box1	
Data Box1	: Off
Speed(SOG)	: Off
Speed(STW)	: Off
Depth	: On
Range	: Off
Bearing	: Off
Position	: On
Wind	: Off
Heading	: Off
Course	: Off
Barom Press	: Off
Temperature	: Off
Time to Go	: Off
Trip Meter	: Off
Odometer	: Off
XTE	: Off
TD	: Off
* Timer	: Off
Scroll Time	: Off
Battery	: Off
Switching Cycle	: 4s

Timer counts time up from 0H00M to 99H59M. Can be reset to zero with the [MARK] key.

2. With Data Box1 selected, press the **ENTER** key.



3. Press ▼ to select On if it is not already selected. All menu items are shown in black, meaning they are available for selection.
4. Use ▲ or ▼ to select a data and then press the **ENTER** key.
5. Use ▲ or ▼ to select Off or On as appropriate and press the **ENTER** key.
6. Repeat steps 4 and 5 as necessary.
7. Use ▲ or ▼ to select Switching Cycle and then press the **ENTER** key.



8. Use ▲ or ▼ to select desired display interval and then press the **ENTER** key.
9. Set up data box 2 similar to how you did data box 1.

Bearing: Select how to display bearing data, fed from navigator. The choices are true and magnetic.

Nav Data: Select source of position data, among GPS, Loran C, and Auto. **Auto** selects navigator in order of accuracy in case of multiple navigators. The order is GPS followed by Loran C.

Wind Spd/Dir: Display wind speed and direction data in True or Apparent. The **apparent wind** is the actual flow of air acting upon a sail, or the wind as it appears to the sailor. The **true wind** is the wind seen by a stationary observer in velocity and direction.

Trip Source: Select source for trip data calculation. The choices are Own (internal speed sensor) and NMEA (speed data from external navigator).

Temp Source: Select source for water temperature data. The choices are Own (internal temperature sensor) and NMEA (temperature data from external navigator).

Trip Reset: Select Yes to reset trip meter to zero. A few beeps sound after resetting is completed.

Speed Source: Select source for speed data. The choices are Own (internal speed sensor) and NMEA (speed data from external navigator).

Odo Reset: Select Yes to reset the odometer to zero. A few beeps sound after resetting is completed.

1. OPERATION

1.20.6 NavNet menu

By connecting the FCV-1150 to a NavNet 3D or NavNet TZtouch unit, you can show the image from the FCV-1150 on the display of the NavNet 3D or NavNet TZtouch and control some functions from the NavNet 3D or NavNet TZtouch. The applicable program version numbers are as follows:

MFD8/MFD12: 1950055-02.01 or later,

MFDBB: 1950064-02.01 or later,

TZT9/14/BB: 1950123-03.01 or later.

For operation of the NavNet 3D or NavNet TZtouch see its operator's manual.

If you set up for NavNet mode connection at installation, the NavNet menu appears.



Gain/Mode: Select FCV-1150 or Navnet to switch control of gain and display between the FCV-1150 and NavNet.

The NavNet feature has five operating characteristics:

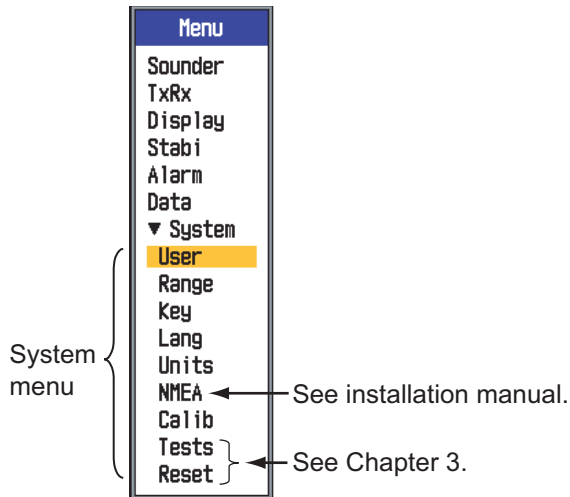
- Certain functions are only operative from the unit selected here.
- Certain functions are operative from both FCV-1150 and NavNet.
- Certain functions are only operative from the FCV-1150.
- Certain functions can be adjusted individually.
- Certain functions are only operative from the NavNet.

For details see Appendix 4.

2. SYSTEM MENU

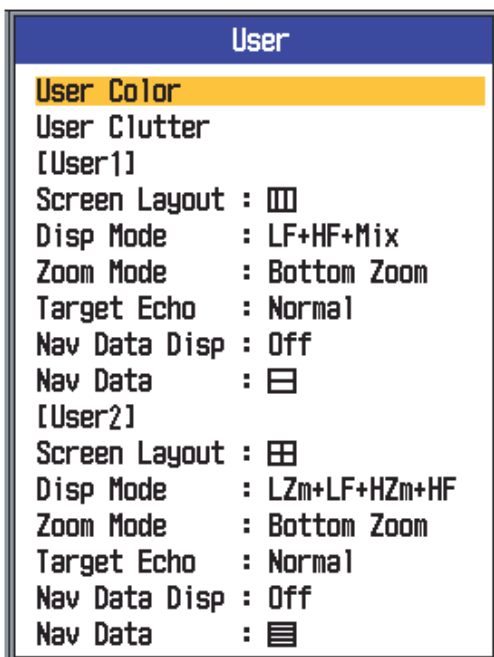
2.1 How to Open the System Menu

Press the **MENU/ESC** key to open the menu, then press **▲** or **▼** to select System.



2.2 User Menu

The User menu mainly provides items for arrangement of the user picture.

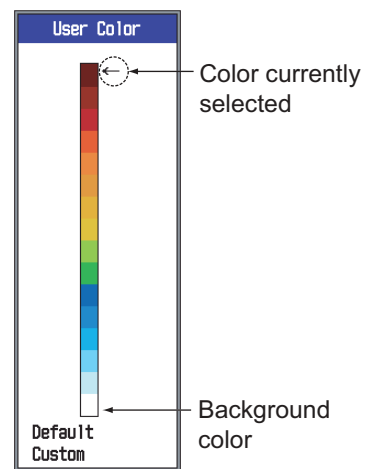


2.2.1 User menu description

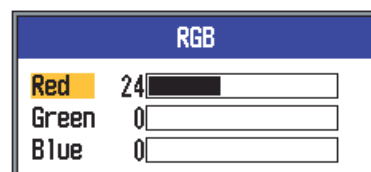
User Color

Arrange the display colors to your liking by changing the color arrangement on the color bar.

1. Select User Color and press the **ENTER** key to show the user color bar.



2. Press **▲** or **▼** to select the color to adjust and press the **ENTER** key. The RGB adjustment window appears.



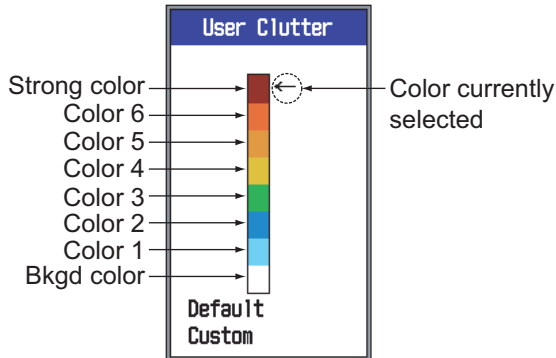
3. Press **▲** or **▼** to select the color to adjust.
4. Press **◀** or **▶** to adjust color.
5. Press the **ENTER** key to finish setting.
6. To enable user colors, press **▼** several times to select Custom at the bottom of the color bar and then press the **ENTER** key.
7. Press **▲** to select Yes and then press the **ENTER** key. Hue on the Display menu is automatically set to custom and Background on the same menu becomes inoperative.
8. Press the **MENU/ESC** key three times to quit the menu.

2. SYSTEM MENU

User Clutter

Select the colors to reject with the clutter rejector.

1. Select User Clutter and press the **ENTER** key to show the user clutter color bar.



2. Use ▲ or ▼ to select the color to adjust and then press the **ENTER** key.
3. Use ▲ or ▼ to set value, referring to the table below.



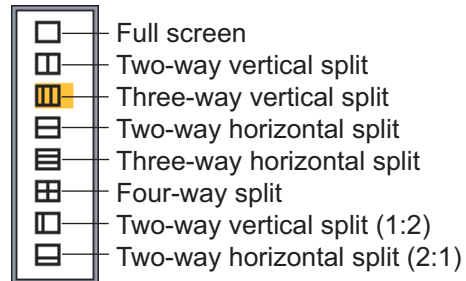
If you want to...	then set...
emphasize strong colors (reddish-brown, red)	Strong color- Color-6: Large value Color-5 to Color-1: Small value
emphasize middle colors (yellow, green)	Color-7 to Color-5: Small value Color-4 and Color-3: Large value Color-2 and Color-1: Small value
remove the weakest color	Color-1: Small value

4. Press the **ENTER** key.
5. To set another color, repeat steps 2-4.
6. To enable the user clutter settings, press ▼ several times to select Custom at the bottom of the color bar and then press the **ENTER** key.
7. Press ▲ to select Yes and press the **ENTER** key. (The setting for HF Curve and/or LF Curve in Clutter on the Sounder menu automatically becomes "Custom".)
8. Press the **MENU/ESC** key three times to quit the menu.

User 1, User 2

Define what to show on the two user display mode screens, selectable with the **MODE** control.

Screen Layout: Select the screen layout, from among the following eight choices.



Display Mode: Select the displays to show. The choices depend on the setting of Screen Layout.

- : HF; LF; HZm; LZm; Mix
- , : HZm+HF; LZm+LF; LF+HF; LZm+HZm; HF+Mix; LF+Mix; HF2+HF1; LF2+LF1
- , : LF+HZm+HF; LZm+LF+HF; LF+HF+Mix
- : LZm+LF+HZm+HF
- : HZm+HF; HZm+LF; LF+HF; LZm+HZm; HF+Mix; LF+Mix
- : HZm+HF; LZm+LF

Key:

HF: High Frequency

LF: Low Frequency

Zm: Zoom

Mix: Mix display

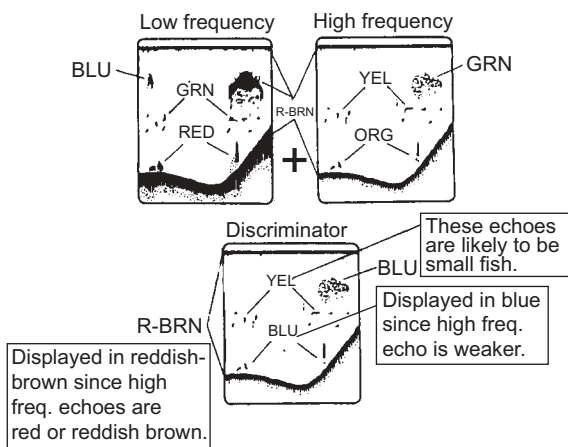
H1, H2, L1, L2: 1 and 2 show the same display. Gain can be adjusted independently for each.

Display	Control for adjusting gain
H1	GAIN HF control
H2	GAIN LF control
L1	GAIN LF control
L2	GAIN HF control

About the mix display

The mix display compares echo intensity between low and high frequencies, and displays echoes from tiny fish in discriminative colors. This is done by utilizing the fact that tiny fish return a stronger echo against a high frequency rather than a low frequency. It works as follows.

- If a high frequency echo is stronger than the corresponding echo on the low frequency, the high frequency echo is displayed.
- If the low frequency echo is stronger than or equal to the high frequency echo, it is less likely to be a tiny fish and therefore is displayed in blue.
- If the echoes on both frequencies have the intensity corresponding to reddish-brown or red, they are displayed in reddish brown or red. This is necessary to display the zero line and bottom in reddish-brown or red.
- In other words, the echoes displayed in orange thru light-blue are considered to be tiny fish such as whitebait.

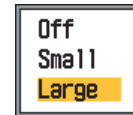


Zoom Mode: Select the zoom display to show, among bottom lock, bottom zoom, marker zoom, discrim 1/2 and discrim 1/3. The fractions in "discrim" indicate the amount of space the discrimination occupies on the left half of the screen.

Target Echo: Set fishing objective. **Normal** is for general purpose fishing. **Surface** is for detecting surface fish. Pulse repetition rate is higher than "Normal" on the 1kW and 2kW transducers that are programmed into the menu. **Squid** detects squid and other individual fish. These items are automatically set: Tx

Pulse, Short 1; Echo Stretch, ON, and Smoothing, Off. **Deep Sea** is the same as Normal.

Nav Data Disp: Turn the nav data display On or Off and select character size, from large or small.

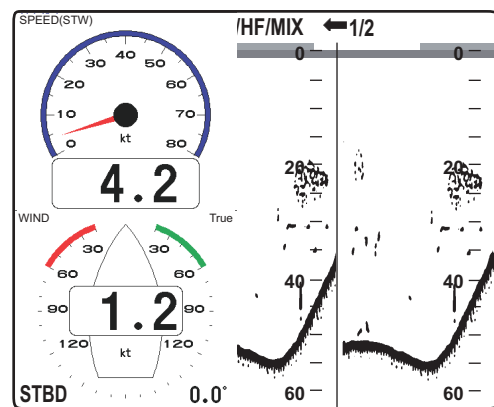


Nav Data: Select the quantity of nav data to show, at the upper left corner of the display. The choices are two, three and four items, as shown right.



2.2.2 Selecting data for nav data displays

1. Operate the **MODE** control to select USER-1 or USER-2, whichever is set up to show nav data.



Nav data display

2. Use ▲ or ▼ to select a data display window.

2. SYSTEM MENU

3. Use ◀ or ▶ to select the nav data item to display. Availability depends on how much nav data is displayed, as shown below.

(1)	(3)	(6)
(2)	(4)	(7)
	(5)	(8)
		(9)

Two-data display Three-data display Four-data display

Items displayable in (1) - (3): speed (STW)*, wind speed and direction*, destination waypoint data*, compass*, heading*, depth, position, course, range and bearing, trip meter, odometer, water temperature, air pressure, time-to-go to destination waypoint, XTE*, speed (SOG)*

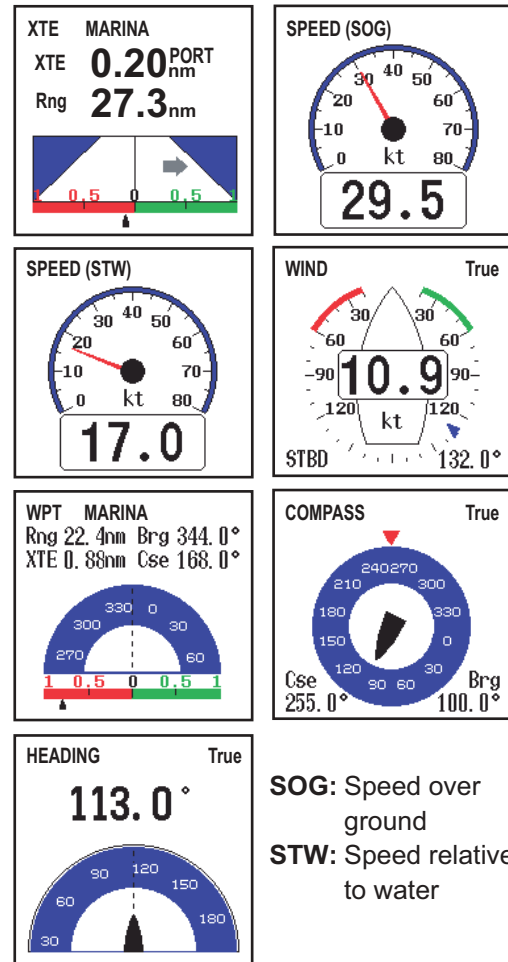
Items displayable in (4) - (9): depth, position, speed (SOG), speed (STW), course, range and bearing, trip meter, odometer, water temperature, heading, wind speed, wind direction, air pressure, time-to-go to destination waypoint, XTE

* = Graphic display

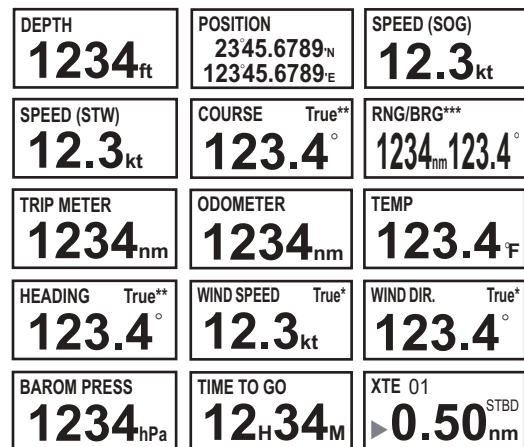
4. Press the **ENTER** key.

Note: When data is lost 30 sec., the display shows “- -” at the location where there is no data.

Item	Necessary data
Latitude/Longitude, Waypoint, Course, Range/Bearing, TTG, XTE	Latitude and longitude
Compass, Heading	Heading
Wind Speed/Direction, Atmospheric Pressure	Wind Indicator, Barometer



SOG: Speed over ground
STW: Speed relative to water



* APP or TRUE, depending on menu setting.
** TRUE or MAG depending on menu setting.
*** To destination waypoint.
▶(green): starboard ◀(red): port

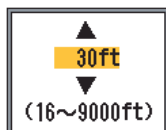
2.3 Range Menu

The Range menu is where you can pre-set basic ranges, zoom range, bottom lock range, and turn independent range adjustment on or off. The default values are suitable for most fishing applications, however you may wish to change pre-set ranges to suit your needs. Note that when the depth unit is changed all range settings are restored to default. Therefore, it is a good idea to change the depth unit first and then change ranges.

Range	
Range 1	: 30ft
Range 2	: 60ft
Range 3	: 120ft
Range 4	: 250ft
Range 5	: 500ft
Range 6	: 1000ft
Range 7	: 1600ft
Range 8	: 3000ft
Zoom Range	: 16ft
B/L Range	: 16ft
Split Range	: Off

Range 1 to Range 8

1. Use ▲ or ▼ to select a range and press the **ENTER** key. For example, select Range 1, and the setting window looks something like the one below.



2. Use ▲ or ▼ to set range. Ranges must be set from shallow to deep, and a range can not be lower than a preceding one. The minimum and maximum ranges available are shown on the range setting window.
3. Press the **ENTER** key to set confirm setting.

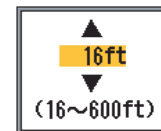
Zoom Range

Zoom range sets the range for the marker zoom and bottom zoom displays. Press ▲ or ▼ to set zoom range as desired. For the horizontal split screen, the range is one-half the value set.



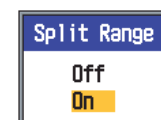
B/L Range

Set display range for bottom lock and bottom discrimination displays. Use ▲ or ▼ to set B/L range as desired. For the horizontal split screen, the range is one-half the value set.

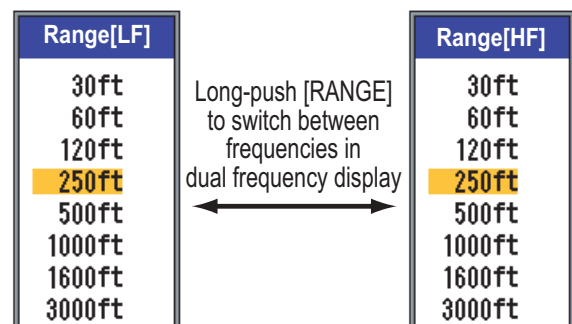


Split Range

Split range enables/disables independent adjustment of range in the dual frequency display. Turn on for independent adjustment. Effective in dual frequency mode only.



1. Rotate the **RANGE** control to show the range selection window.



2. Push the **RANGE** control. Each press selects high or low frequency alternately.
3. Rotate the **RANGE** control to choose desired range.

2.4 Key Menu

The Key menu selects the function for the **FUNCTION** control and turns the key beep on or off.

Key	
FUNC Key	: TVG
Key Beep	: Off

2.5 Language Menu

The Language menu selects the language to use. Select Language and press the **ENTER** key. Use ▲ or ▼ to select language.

Lang	
Language	: English

English
Français
Español
Deutsch
Italiano
Português
Dansk
Svenska
Norsk
Suomi
Ελληνικά
中文
日本語
ភាសាខ្មែរ
한국어
Кириллица

2.6 Units Menu

The Units menu lets you select the unit of measurement for depth, temperature, speed, wind, and distance, from the choices shown below.

Units	
Depth*	: ft
Temp	: °F
Speed	: kt
Wind	: kt
Distance	: nm

* Not adjustable when NavNet mode is active.

Depth: m, ft, fa, HR, pb

Temperature: °C, °F

Speed: kt, km/h, mph

Wind: kt, km/h, mph, m/s

Distance: nm, km, sm

2.7 Calib Menu

The Calib menu mainly lets you apply offsets to speed, water temperature, and bottom level.

Calib.	
Sound Speed*	: 1500.0m/s
Temp	: + 0.0°C
Speed(STW)	: + 0%
Bottom Level	: 0
Hardness	: 0
Zero Line	: On
Zero Line Area	: 4.5ft
[HF]	
Draft*	: + 0.0m
Gain ADJ	: + 0
[LF]	
Draft*	: + 0.0m
Gain ADJ	: + 0

* Not adjustable when NavNet mode is active.

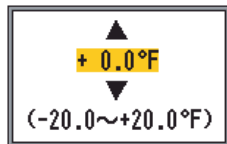
Sound Speed

Adjust the sound velocity of the Tx/Rx signal if the depth indication is incorrect, because of water temperature or salinity density.



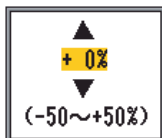
Temp

If the water temperature indication is wrong, you can apply an offset to it to correct it. For example, if the water temperature indication is 2° higher than actual water temperature, enter -2. For details, refer to the installation manual.



Speed STW

If the speed indication is wrong, you can apply an offset to it to correct it. For example, if the speed indication is 10% lower than actual speed, enter +10. For details, see the installation manual.

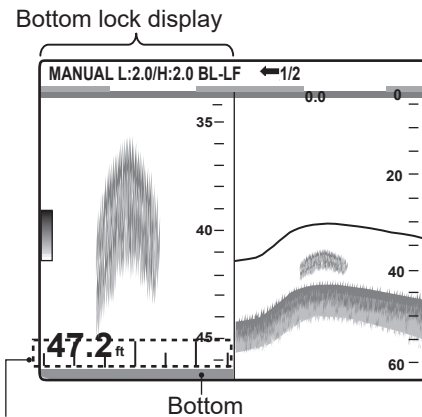


Hardness

If the hardness value output via NMEA is incorrect, apply an offset to correct it.

Bottom Level

In the default bottom level setting (0), the equipment judges consecutive strong echoes to be bottom echoes. If, in that setting, the depth indication is unstable, adjust the bottom level. If vertical lines extend upward from the bottom echo in the bottom lock display, lower the bottom level to erase the vertical lines. If the level is too low, however, it may be difficult to distinguish bottom fish from the bottom echo.



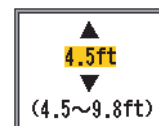
Set the bottom level so that these vertical lines just disappear.

Zero Line

Turn the zero line (transmission line) on or off. When turned off, the transmission line disappears, which allows you to better watch fish echoes near the surface. The length of the transmission line changes with transducer used and installation characteristics. If the width of the transmission line is 4.5 ft (default value) or more, set the transmission line width with Zero Line Area, as below.

Zero Line Area

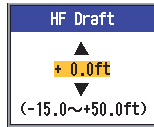
This feature adjusts the width of the transmission line from the area specified when the menu item Zero Line is turned off. The effective range is 4.5 to 9.8 ft. For a long tail, increase the value. If the transmission line does not disappear, raise the STC or lower the Tx power.



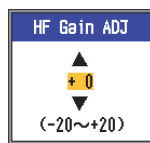
2. SYSTEM MENU

[HF]. [LF]

Draft: The default depth display shows the distance from the transducer. If you would rather show the distance from the sea surface, set your ship's draft.



Gain ADJ: If the gain is too high or too low, or there is a difference in the gain between the low and high frequencies, you can compensate for it here.



3. MAINTENANCE & TROUBLE-SHOOTING

WARNING

ELECTRICAL SHOCK HAZARD
Do not open the equipment.

Hazardous voltage exists inside the equipment. Only qualified personnel should work inside the equipment.

Use the proper fuse.

Use of a wrong fuse can result in damage to the equipment and cause fire.

IMPORTANT

Do not apply paint, anti-corrosive sealant or contact spray to coating or plastic parts.

Those items contain organic solvents that can damage coating and plastic parts, especially plastic connectors.

3.1 Maintenance

Regular maintenance is essential for good performance. Checking the items listed in the table below monthly will help keep your equipment in good shape for years to come.

Item	Action
Transducer cable	Check cable for damage.
Power cable, transducer cable plug	Check that they are tightly fastened. Refasten if necessary.
Display unit ground	Check for corrosion. Clean if necessary.
Power supply voltage	Check voltage. If out of rating, correct problem.

3.2 Care of Display Unit

Dust or dirt on the cabinet can be removed with a soft, dry cloth. For stubborn dirt, water-diluted mild detergent can be used. In this case, wipe the cabinet with a dry cloth after using detergent. Do not use solvents such as thinner, acetone or benzene to clean the unit. They can remove paint and markings.

To clean the LCD screen, use the special LCD cleaning cloth provided with your sounder.

3.3 Transducer Maintenance

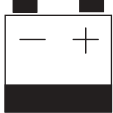

Marine life on the transducer face will result in a gradual decrease in sensitivity. Check the transducer face for cleanliness each time the boat is dry-docked. Carefully remove any marine life with a piece of wood or fine-grade sandpaper.

3.4 Fuse Replacement

The two fuses (Type: FGMB-A 125V 7A PBF, Code No.: 000-157-493-10) inside the display unit protect the system from reverse polarity of the power supply and equipment fault. If a fuse blows find the cause before replacing it. If it blows again after replacement, contact your dealer for advice.

3.5 Battery Voltage Alert

A battery icon appears when the battery voltage is too high or too low. Check the battery when a battery icon appears.

Icon	Meaning
	Voltage is lower than 10 VDC. If the voltage goes below 9 V, the equipment automatically shuts itself off.
	Voltage is higher than 32 VDC. If the voltage goes higher than 33 V, the equipment automatically shuts itself off.

3.6 Troubleshooting

The table below provides basic troubleshooting procedures which the user may follow to restore normal operation.

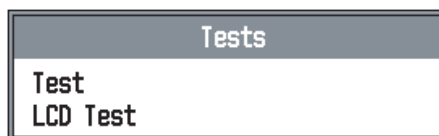
Symptom	Remedy
Neither echo nor fixed range scale appears.	<ul style="list-style-type: none"> • Check battery voltage. • Check if fuse has blown. • Check power cable.
No echo appears but fixed range scale appears	<ul style="list-style-type: none"> • Check if display advance is set to "Stop". • Check transducer plug. • Check transducer cable.
Echo appears but no zero line.	<ul style="list-style-type: none"> • Check if range shifting is set to "0". • Check if zero line is on.
Sensitivity is low.	<ul style="list-style-type: none"> • Check gain setting. • Check for air bubbles or marine life on transducer face. • Check for sediments in water. • Check if bottom is too soft to return an echo.

Symptom	Remedy
Extreme interference or noise	<ul style="list-style-type: none"> • Check if transducer is too close to engine. • Check if unit is properly grounded. • Check if other echo sounders of same frequency as own are being operated nearby.
Speed and/or water temperature readout is unrealistic or not shown.	<ul style="list-style-type: none"> • Check that the sensor is connected.
Position readout is unrealistic or not shown.	<ul style="list-style-type: none"> • Check connection between sounder and navigator. • Check navigator itself.

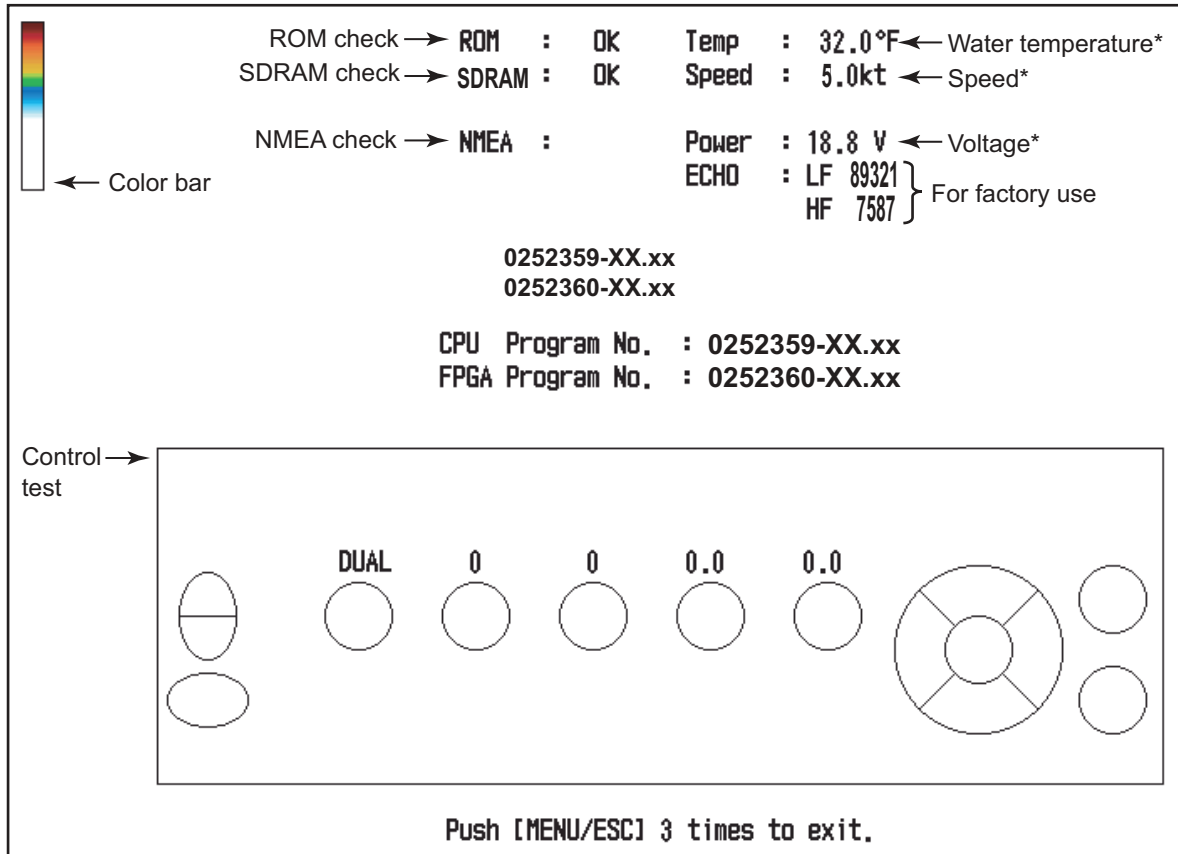
3.7 Self Test

The self test checks the equipment for proper operation and displays various information.

- Checks:
 - ROM
 - SDRAM
 - NMEA port
 - Power supply voltage
 - Controls
 - Color bar
 - Displays:
 - CPU program no.
 - FPGA program no.
 - LF and HF echo levels
 - Water temperature
 - Speed
1. Press the **MENU/ESC** key to open the menu.
 2. Press **▼** to select Tests to show the Tests menu.



3. Press the **ENTER** key.



XX=Program no.
 xx=Program version no.
 * Updated every second.

- Press ▲ to select Test and then press the **ENTER** key. The self test results appear together with the key test screen, as shown above.
- To escape at any time, press the **MENU/ESC** key three times.

Self test description

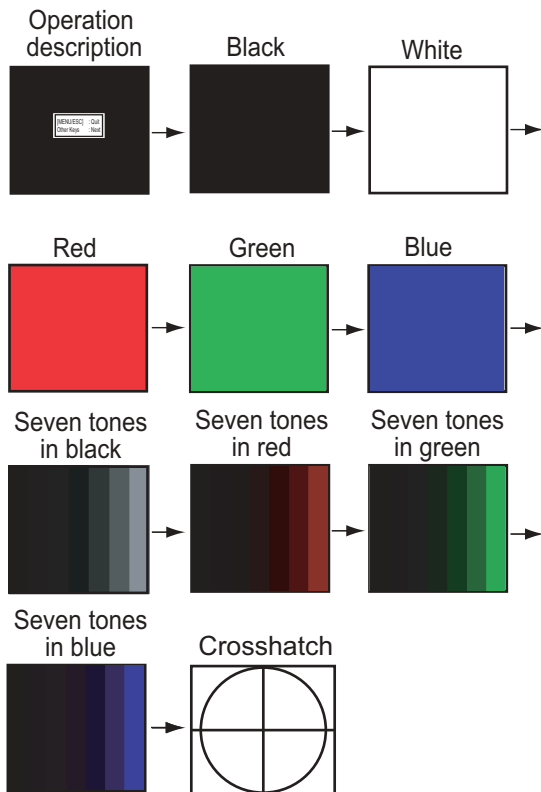
- **ROM, SDRAM and NMEA checks:** Result is shown as OK or NG (No Good). For any NG, try the test again. If the result is still NG, contact your dealer for advice. (A special connector is required to test NMEA. Nothing is shown if the connector is not connected.)
- **Control test:** Check controls for proper operation.
 - **Keys:** Push each key. The key's on-screen location turns red or white alternately and a beep sounds with each push.

- **FUNCTION, GAIN and RANGE controls:** Rotate the control while observing its on-screen location. Clockwise rotation increases the value; counterclockwise rotation decreases it. Next, push the control. Its on-screen location turns red or white alternately and a beep sounds with each push.
- **MODE control:** Rotate the control. The name of mode selected appears above the control's on-screen location. Push the control. The location turns red or white alternately and a beep sounds with each push.

3.8 LCD Test

The LCD test checks for proper display of all colors. To stop the test at any time, press the **MENU/ESC** key.

1. Press the **MENU/ESC** key to open the menu.
2. Press **▼** to select Tests to show the Tests menu and press the **ENTER** key.
3. Press **▼** to select LCD Test and press the **ENTER** key.
4. Press any key except the **MENU/ESC** key to start the test.
5. Press any key except the **MENU/ESC** key to change the screen, in the sequence shown below. After the crosshatch screen is displayed, the Tests menu reappears.
6. Press the **MENU/ESC** key twice to close the menu.



3.9 Restoring Default Settings

You may wish to restore default settings to start afresh.

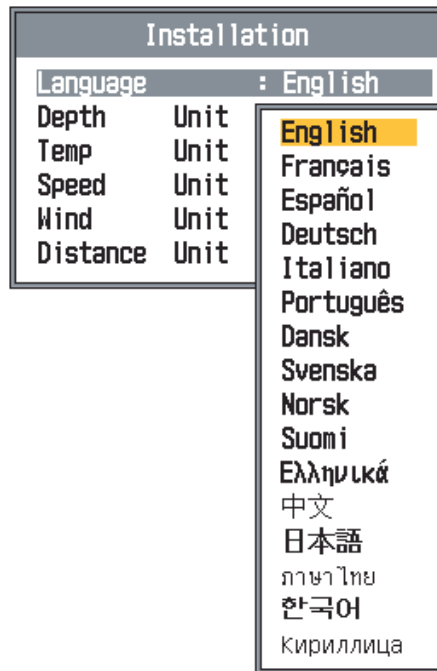
1. Press the **MENU/ESC** key to open the menu.
2. Press **▼** to select Reset at the bottom of the menu bar to show the Reset menu.



3. Press **▶** to select Factory Reset and press the **ENTER** key. The confirmation window appears.

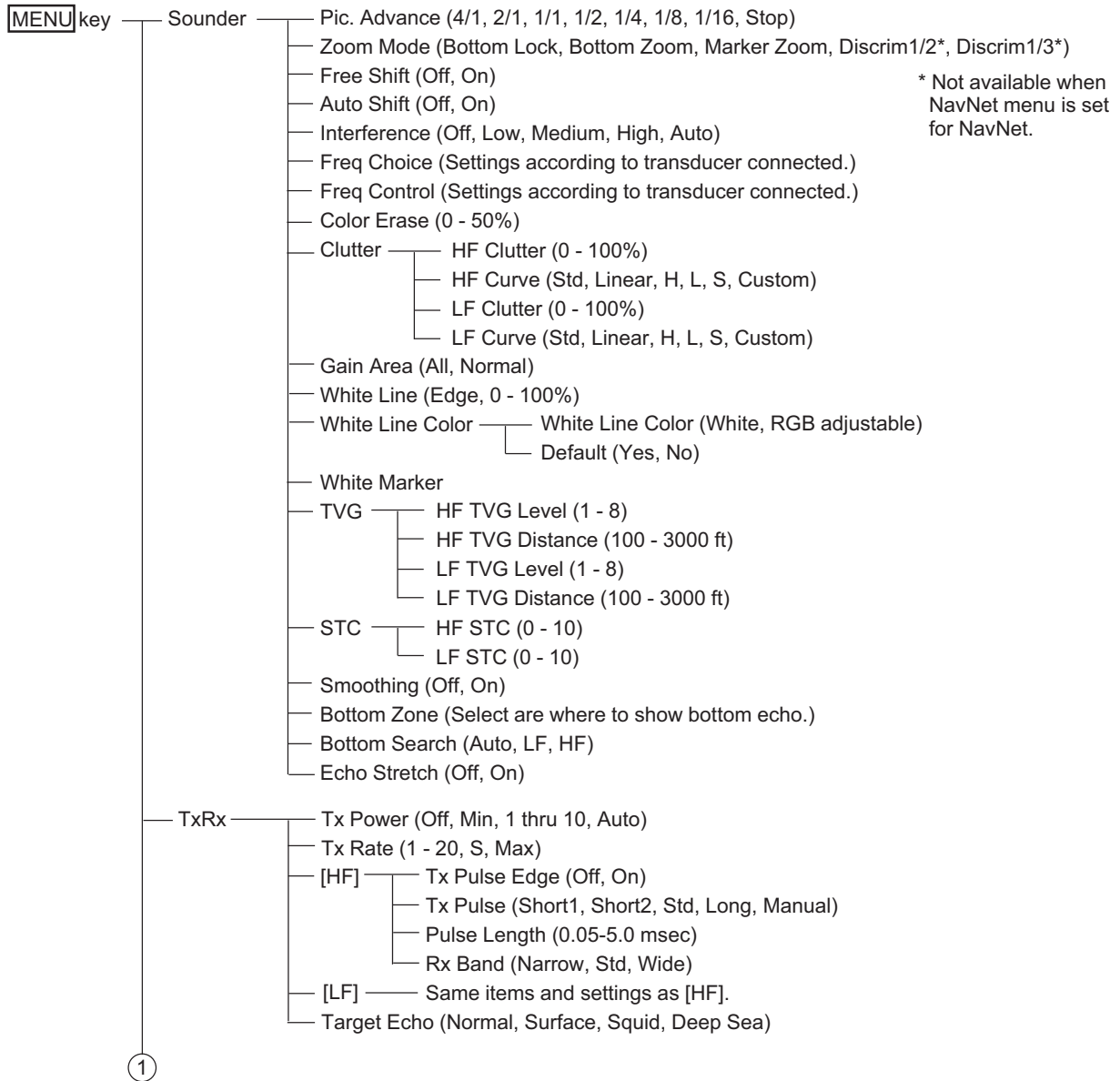


4. Press **▲** to select Yes and then press the **ENTER** key. A beep sounds, the equipment restarts, and then the installation menu appears.

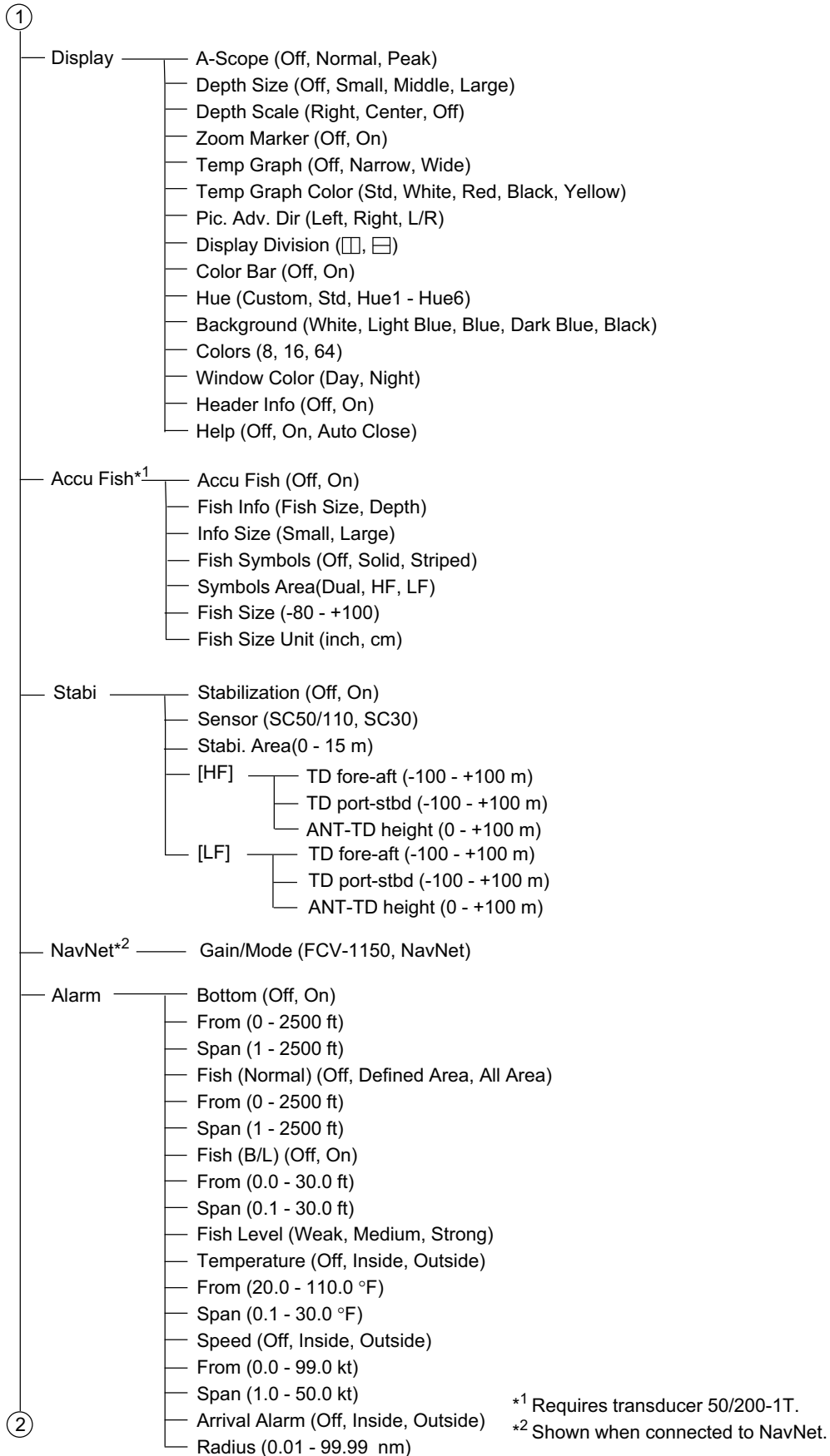


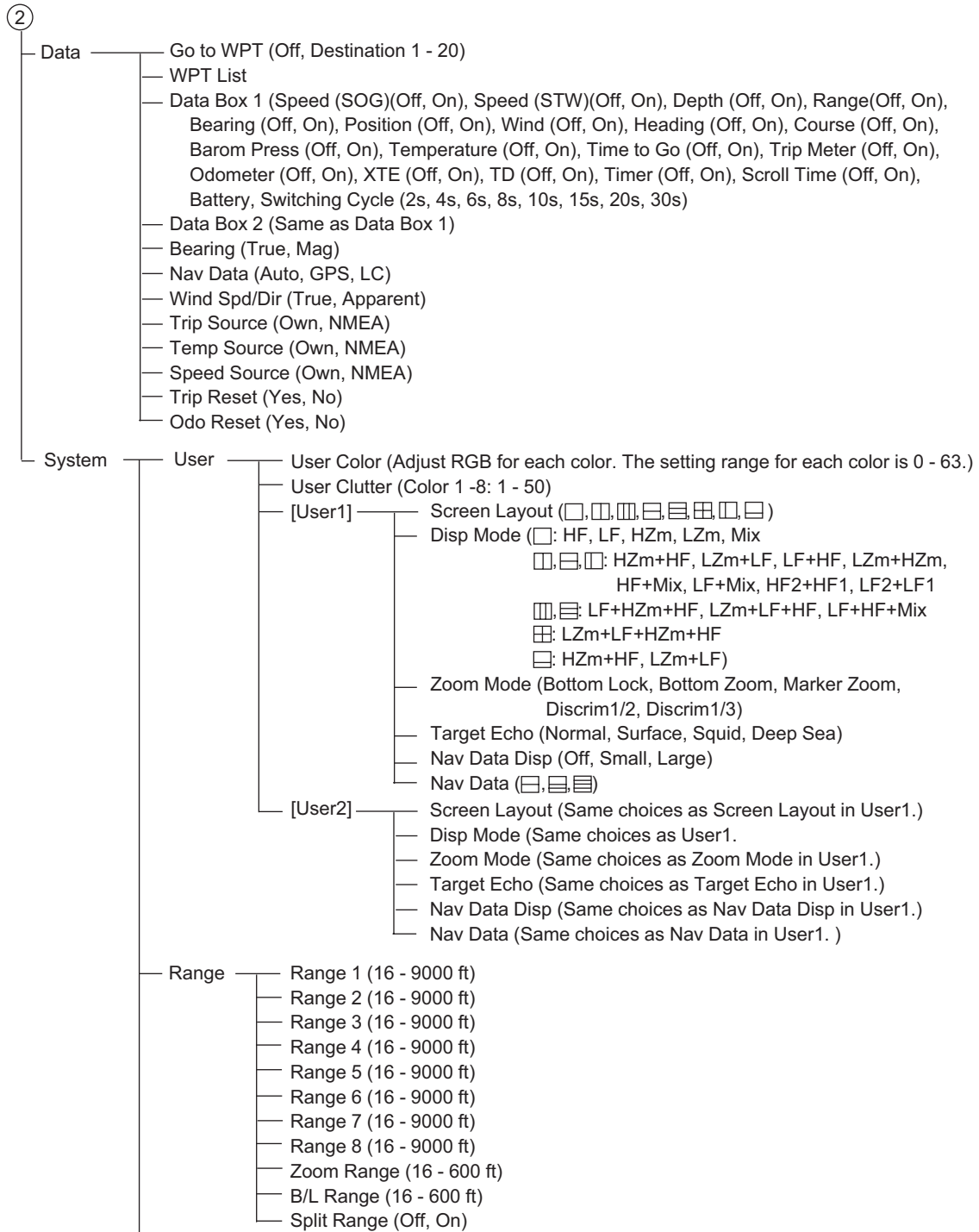
5. If necessary, select your language and units of measurement. Press the **MENU/ESC** key twice to finish.

APPENDIX 1 MENU TREE

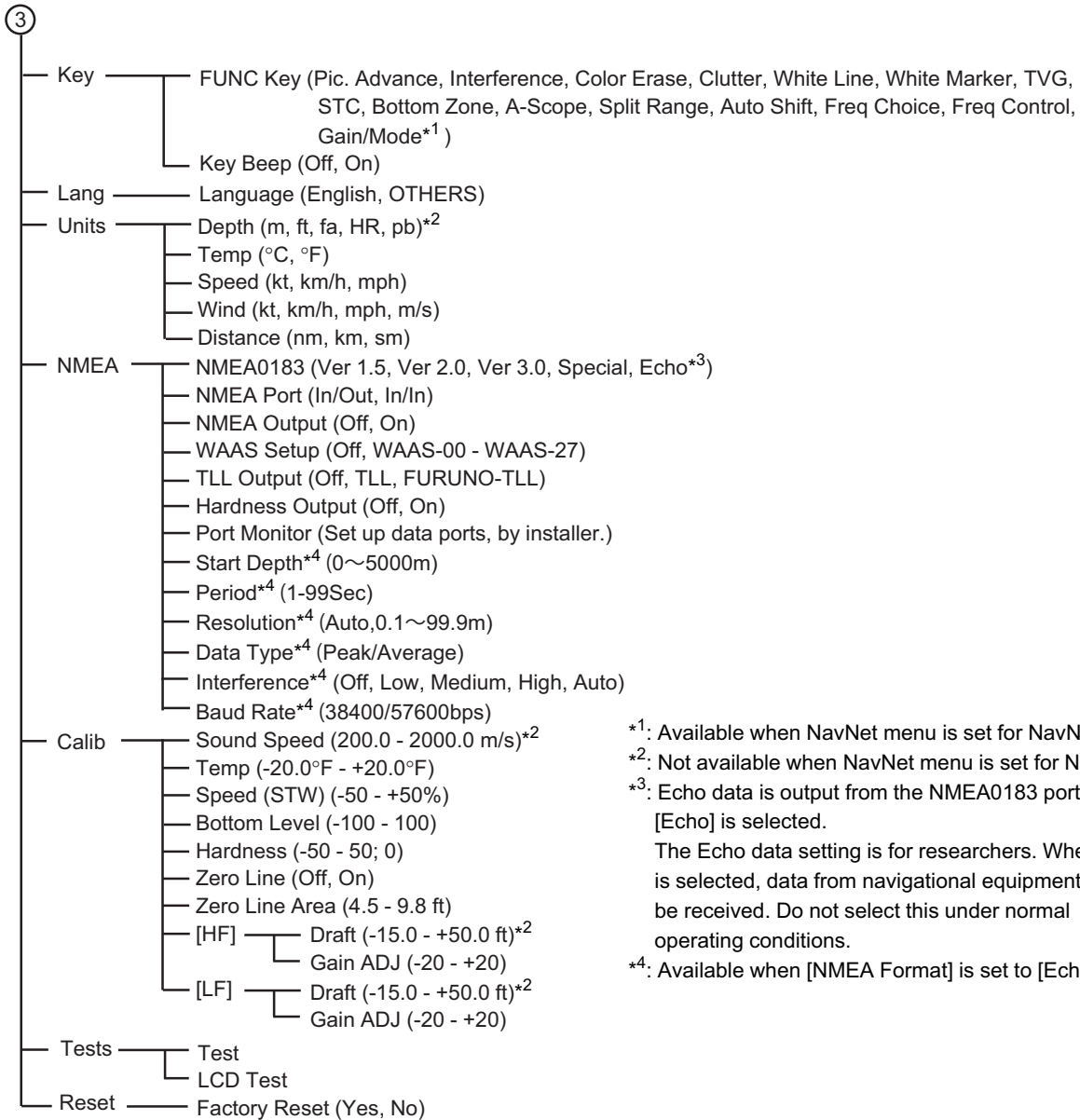


APPENDIX 1 MENU TREE





APPENDIX 1 MENU TREE

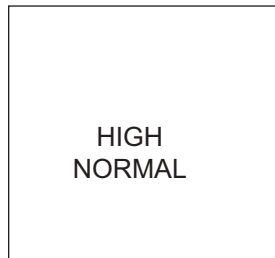


*1: Available when NavNet menu is set for NavNet.
 *2: Not available when NavNet menu is set for NavNet.
 *3: Echo data is output from the NMEA0183 port when [Echo] is selected. The Echo data setting is for researchers. When Echo is selected, data from navigational equipment cannot be received. Do not select this under normal operating conditions.
 *4: Available when [NMEA Format] is set to [Echo].

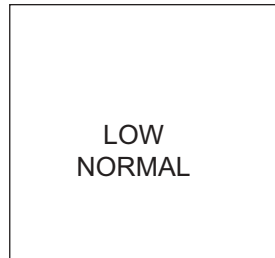
APPENDIX 2 SCREEN LAYOUT

The screen may be divided as desired with Screen Layout on the User menu.

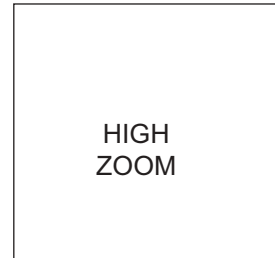
No split



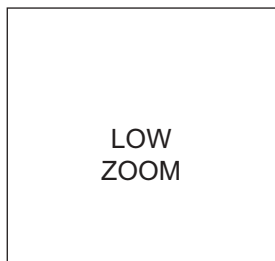
[HF]: Normal



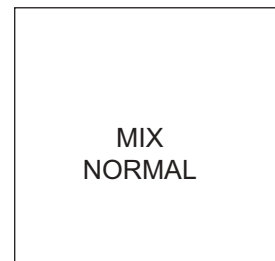
[LF]: Normal



[HF]: Zoom

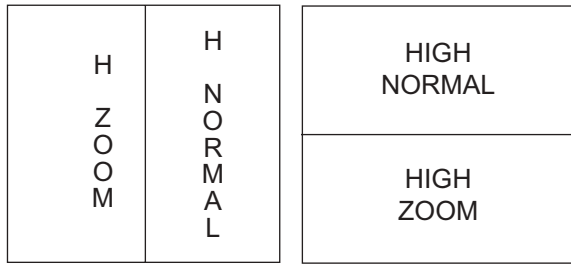


[LF]: Zoom

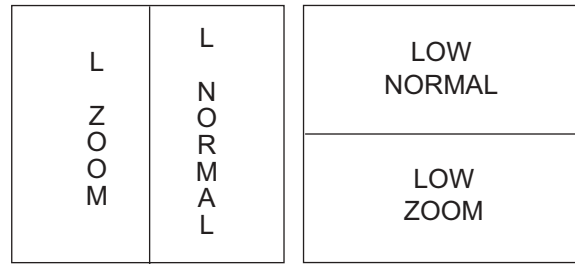


[MIX]: Normal

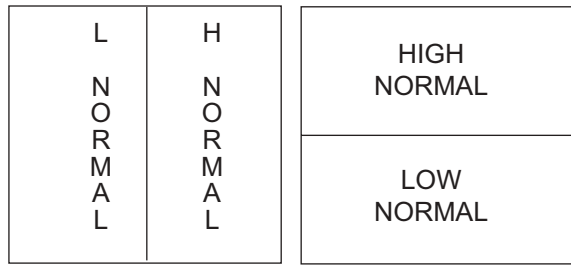
Two-way split



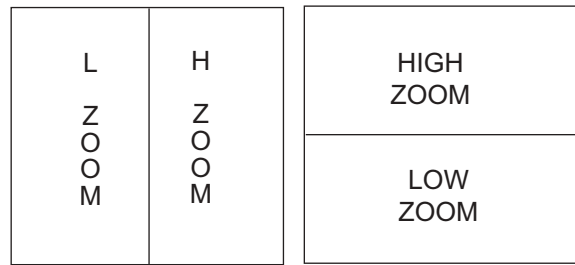
[HF]: Zm/Nor



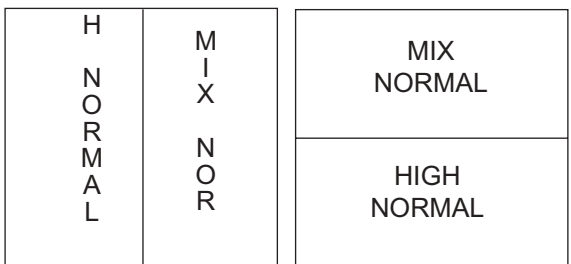
[LF]: Zm/Nor



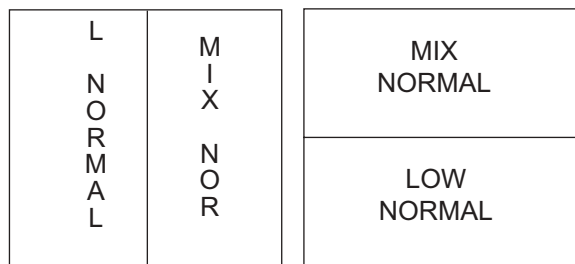
[LF]+[HF]



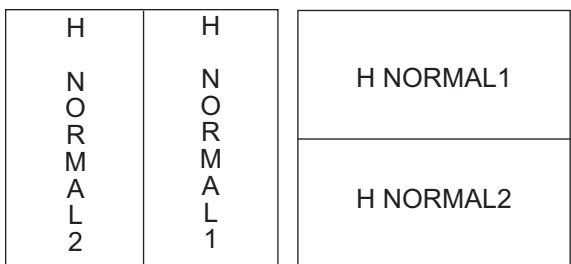
[LF]:Zm+[HF]:Zm



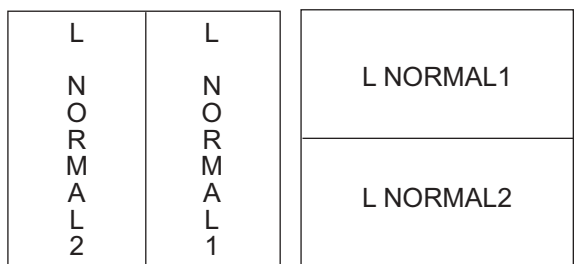
[HF]+[MIX]



[LF]+[MIX]



H2+H1



L2+L1

Note 1: For the vertical split (1:2), HZm+HF, LZm+LF, LF+HF, LZm+HZm, HF+Mix, LF+Mix only. The display division is 1/3 left and 2/3 right.

Note 2: For the horizontal split (1:2), HZm+HF, LZm+LF only. The display division is 1/3 left and 2/3 right.

Three-way split

L N O R M A L	H Z O O M	H N O R M A L	HIGH NORMAL
			HIGH ZOOM
			LOW NORMAL

[LF]+[HF]: Zm/Nor

L Z O O M	L N O R M A L	H N O R M A L	HIGH NORMAL
			LOW NORMAL
			LOW ZOOM

[LF]: Zm/Nor+[HF]

L N O R M A L	H N O R M A L	M I X N O R	MIX NORMAL
			HIGH NORMAL
			LOW NORMAL

[LF]+[HF]+[MIX]

Four-way split

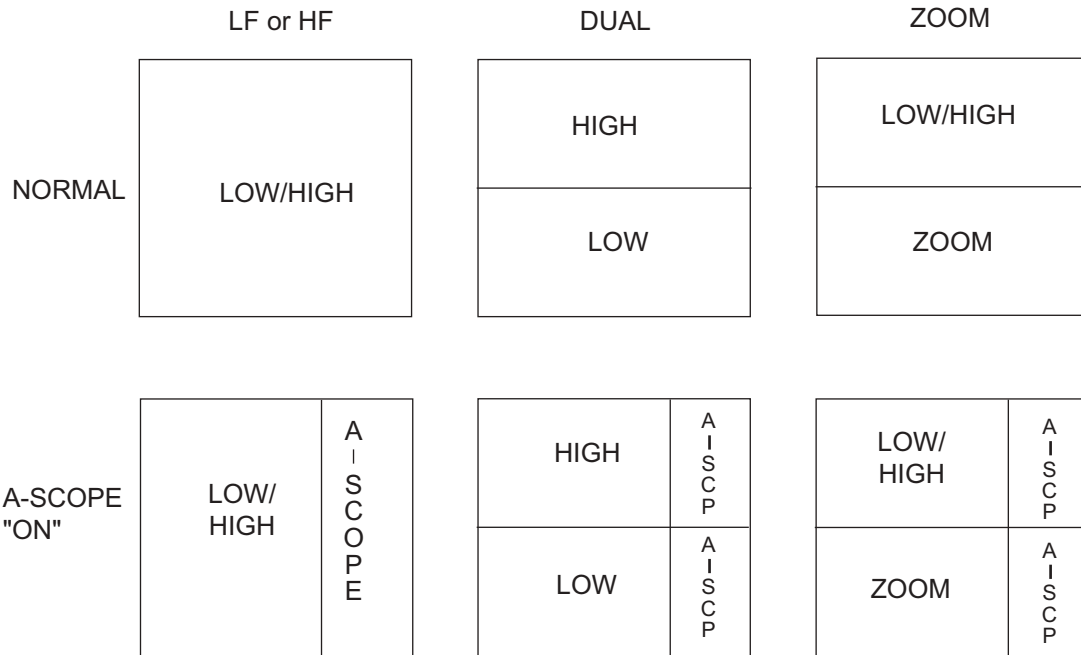
LOW NOR	HIGH NOR
LOW ZOOM	HIGH ZOOM

[LF]: Zm/Nor+[HF]: Zm/Nor

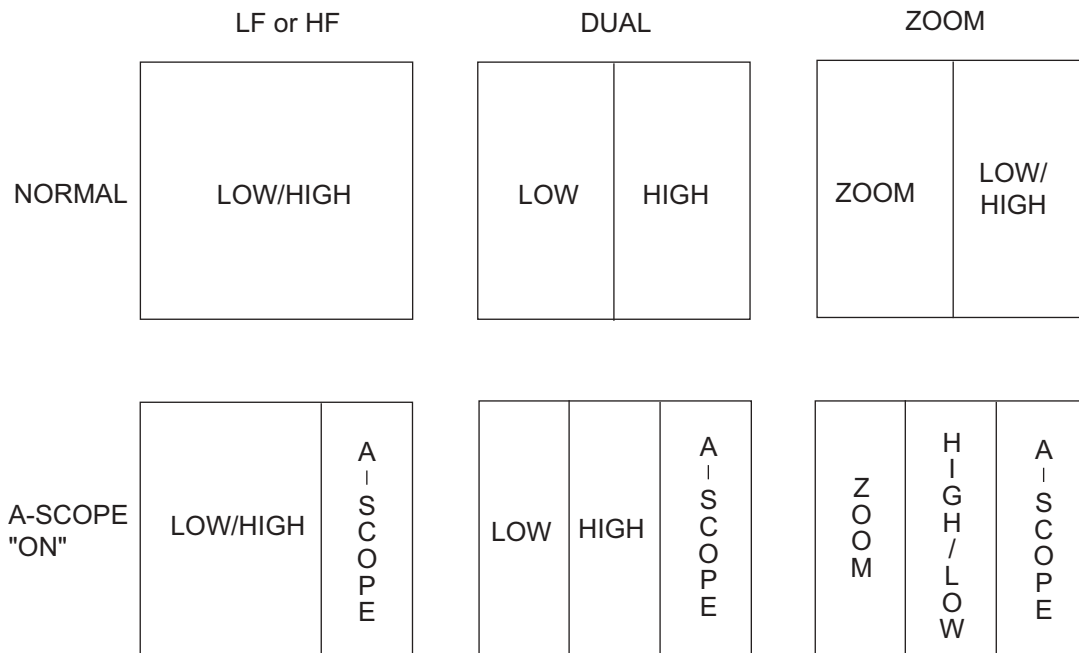
APPENDIX 3 SCREEN DIVISION

The display may be divided vertically and horizontally as shown below, with Display in the Display menu.

Horizontal division



Vertical division



APPENDIX 4 NAVNET MODE AND FUNCTION AVAILABILITY

Function (Name at NavNet in parentheses if different)	Available with unit selected at Gain/Mode	Available at both units	Available only at FCV-1150	Independent adjustment	Available only at NavNet
Gain	Yes	No	No	No	No
Mode* ¹	Yes	No	No	No	No
Auto Range	No	Yes	No	No	No
Auto Gain (Auto Mode)	No	Yes	No	No	No
Auto Gain Offset	No	No	Yes	No	No
Shift (Range Shift)	No	Yes	No	No	No
Auto Shift* ²	No	No	Yes	No	No
Picture Advance	No	Yes	No	No	No
Zoom Mode* ³ (Mode)	No	Yes	No	No	No
Interference Rejection	No	Yes	No	No	No
Frequency Control (Frequency Adjust)	No	Yes	No	No	No
Color Erase	No	No	Yes	No	No
Clutter	No	No	Yes	No	No
White Marker	No	No	Yes	No	No
TVG	No	No	Yes	No	No
STC	No	No	Yes	No	No
Smoothing* ⁴ (High Resolution)	No	Yes	No	No	No
Bottom Zone (Bottom Range Shift Area)	No	No	Yes	No	No
TX Power (Transmission Power)	No	No	Yes	No	No
TX Rate (Transmit Rate)	No	Yes	No	No	No
TX Pulse	No	Yes	No	No	No
Pulse Length	No	No	Yes	No	No
RX Band	No	Yes	No	No	No
A-scope	No	No	No	Yes	No
Zoom Marker (Zoom Reference Lines)	No	Yes	No	No	No
Temp Graph	No	No	Yes	No	No
Window Color (Background Color)	No	No	No	Yes	No
Colors (Echo Color Levels)	No	No	No	Yes	No
ACCU-FISH	No	Yes	No	No	No
Fish Info (ACCU-Fish Info)	No	No	No	Yes	No

APPENDIX 4 NAVNET MODE AND FUNCTION AVAILABILITY

Function (Name at NavNet in parentheses if different)	Available with unit selected at Gain/Mode	Available at both units	Available only at FCV-1150	Independent adjustment	Available only at NavNet
Info Size	No	No	Yes	No	No
Fish Symbols (ACCU-Fish Symbols)	No	No	No	Yes	No
Fish Size (ACCU-Fish Size Correction)	No	Yes	No	No	No
Stabilization (Heaving Correction)	No	Yes	No	No	No
Fish Alarm/ Fish B/L Alarm relationship	No	Yes	No	No	No
Fish Level	No	No	No	Yes	No
Zoom Range (Zoom Range Span)	No	Yes	No	No	No
B/L Range (Bottom Lock Range Span)	No	Yes	No	No	No
Split Range	No	No	Yes	No	No
Depth Unit	No	No	No	No	Yes
Sound Speed (Salt Water)	No	No	No	No	Yes
Bottom Level	No	No	Yes	No	No
Draft* ⁵ (Transducer Draft)	No	No	No	No	Yes
Gain Adjust	No	No	Yes	No	No
Zero Line, Zero Line Area (Zero Line Rejection, Zero Line Range)	No	No	Yes	No	No

*¹ Neither the USER1 nor USER2 display (selected with the MODE control) can be shown on the NavNet 3D and NavNet TZtouch when Gain/Mode is set for FCV-1150.

*² Shift at NavNet 3D and NavNet TZtouch is inoperative when auto shift is active.

*³ Neither [Discrim 1/2] or [Discrim 1/3] is available in FCV-1150's zoom mode.

*⁴ NavNet 3D and NavNet TZtouch's High Resolution is automatically deactivated when FCV-1150's Smoothing is activated and vice versa.

*⁵ The changes made to the NavNet 3D or NavNet TZtouch are not reflected to the FCV-1150.

**SPECIFICATIONS OF COLOR LCD SOUNDER
FCV-1150**

1 ECHO SOUNDER

- 1.1 TX frequency 28/38/50/68/82/88/107/150/200 kHz, select 2 channels
- 1.2 Output power 1, 2 or 3 kW
- 1.3 Power reduction Auto/ 10 to 100%, 10% step
- 1.4 TX rate Max. 3000 pulse/min (5 to 3000 m range, normal mode, TX Max)
- 1.5 Pulselength 0.05 to 5.0 msec

2 DISPLAY UNIT

- 2.1 Display mode 12.1-inch color LCD, 800 x 600 dots
- 2.2 Brilliance 900 cd typical
- 2.3 Echo color 8/16/64 colors according to echo intensity
- 2.4 Background color Selectable among 5 colors
- 2.5 Range shift Range: 5-3000 m, Shift: 0-2000 m, Expansion range: 5-200 m
- 2.6 Display mode Single-frequency, Dual-frequency, Zoom, User 1/2, A-scope
- 2.7 Zoom display Marker zoom, Bottom zoom, Bottom-lock expansion, Bottom discrimination
- 2.8 Picture advance speed 7 steps (Lines/TX: Stop, 1/16, 1/8, 1/4, 1/2, 1/1, 2/1, 4/1), Synchronize w/ ship's speed
- 2.9 Alarm Fish (Normal/Bottom), Water temperature, Bottom, Ship's speed/arrival
- 2.10 Noise limiter Frequency range depends on transducer in use
- 2.11 Automatic indication Automatic gain adjust (fishing/cruising), Automatic range/shift, Water temperature graph*
- 2.12 Additional function Heaving adjustment*, Fish length indication (50/200-1T required)
*: Optional sensor required

3 INTERFACE

- 3.1 Number of port NMEA0183 Ver.1.5/2.0/3.0 (I/O).....1
Satellite compass (Input, 38400bps).....1
- 3.2 Input data BWC, GGA, GLC, GLL, GNS, GTD, HDG, HDT, MDA, MTW, MWV, RMA, RMB, RMC, VHW, VTG, XTE
- 3.3 Output data DBS, DBT, DPT, MTW*, RMB, TLL, VHW
PFEC SDbhr/es1/es2/esd/mrk, pidat
*: Optional sensor required

4 POWER SUPPLY

- 4.1 Display unit 12-24 VDC: 3.3-1.7 A
- 4.2 Rectifier (PR-62, option) 100/110/220/230 VAC, 1 phase, 50/60Hz

5 ENVIRONMENTAL CONDITIONS

- 5.1 Ambient temperature -15°C to +55°C
- 5.2 Relative humidity 93% at +40°C

INDEX

A

Accu Fish	
enabling/disabling	18
fish info.....	19
fish size offset	20
fish symbols	19
Alarms	
activating.....	13
arrival	13
bottom	13
fish (bottom lock).....	13
fish (normal)	13
speed	13
water temperature	13
Arrival alarm.....	13
A-scope display.....	12
Auto shift	21

B

Background color	25
Battery voltage	38
Bearing format	27
Bottom alarm.....	13
Bottom discrimination display	4
Bottom level	35
Bottom lock display	3
Bottom lock range	33
Bottom search	23
Bottom zone	23
Bottom zoom display.....	4
Brilliance	2

C

Calib menu	34
Clutter	10
Color bar on/off	25
Color erase	10
Color quantity	25
Control description	1

D

Data box 1 and 2.....	26
Data menu	26
Default settings	40
Depth indication size.....	25
Depth measurement	8
Depth scale	25
Display division	25
Display selection	2
Draft	36
Dual frequency display.....	3

E

Echo stretch	23
--------------------	----

F

Fish (bottom) alarm	13
Fish (normal) alarm	13
Free shift	20
Frequency control	21
Frequency preset	21
FUNCTION control.....	15
Fuse replacement	37

G

Gain	
adjustment.....	7
area	22
Gain adjustment	36
GAIN control	7

H

Header info	25
-------------------	----

I

Interference rejector	9
-----------------------------	---

K

Key menu	34
----------------	----

L

Language menu	34
LCD test	40

M

Maintenance	37
Marker zoom display	4
Menu tree	AP-1
Mix display	31
MODE control.....	2

N

Nav data displays.....	31
Nav data source	27
NavNet menu	28

O

Odometer reset	27
----------------------	----

P

Picture advance direction.....	25
Picture advance speed	9
POWER/BRILL key	2

R

RANGE key	5
Range menu	33
Range preset	33
Range selection	5
Rx bandwidth	24

S

Screen layout	30
Self test	38
SHIFT key	6

Smoothing	23
Sound speed offset	35
Sounder menu.....	20
Speed alarm.....	13
Speed offset.....	35
Speed source	27
Split range	33
Stabilizer menu	26
System configuration.....	vi
System menu	29
T	
Target echo	24, 31
Trip distance reset.....	27
Trip distance source.....	27
Troubleshooting	38
TVG.....	11
Tx power	24
Tx pulse.....	24
Tx rate	24
U	
Unit menu.....	34
User 1 and 2 displays.....	30
description.....	5
User clutter	30
User color.....	29
User menu.....	29
V	
VRM	8
W	
Water temperature alarm	13
Water temperature graph	25
Water temperature graph color	25
Water temperature offset	35
Water temperature source	27
Waypoints	
destination waypoint.....	18
editing.....	17
entering	16
erasing	17
White line	22
White marker.....	23
Wind speed indication	27
Window color.....	25
Z	
Zero line	35
Zoom marker.....	25
Zoom mode preset.....	20, 31
Zoom range.....	33

EC Declaration of Conformity



We **FURUNO ELECTRIC CO., LTD.**

(Manufacturer)

9-52 Ashihara-Cho, Nishinomiya City, 662-8580, Hyogo, Japan

(Address)

declare under our sole responsibility that the product

COLOR LCD SOUNDER FCV-1150

(Model name, type number)

to which this declaration relates is in conformity with the following standard(s) or other normative document(s)

IEC 60945 Ed.4.0: 2002, clauses 9.2, 9.3, 10.3, 10.4, 10.5, 10.6, 10.7, 10.8 and 10.9

(title and/or number and date of issue of the standard(s) or other normative document(s))

For assessment, see

- EMC Test Report FLI 12-07-051, October 17, 2007 prepared by Furuno Labotech International Co., Ltd.

This declaration is issued according to the Directive 2014/30/EU of the European Parliament and of the Council of 26 February 2014 on the harmonisation of the laws of the Member States relating to electromagnetic compatibility.

On behalf of Furuno Electric Co., Ltd.

Nishinomiya City, Japan
April 20, 2016

(Place and date of issue)

Yoshitaka Shogaki
Department General Manager
Quality Assurance Department

(name and signature or equivalent marking of authorized person)