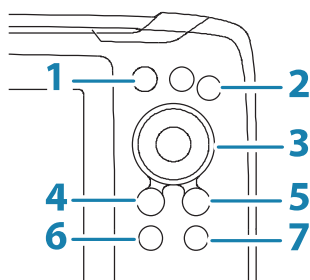


5 HDI, 5 TS, 7x GPS TS, 7 HDI, 7 TS, 9 HDI, 9 TS and 12 TS models

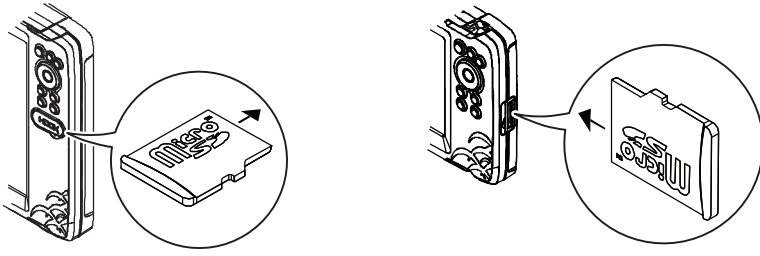
Front controls



1	Pages	Press to activate the Home page.
2	Zoom in/ out	Press to zoom the image. Press both keys simultaneous to create a MOB (Man Over Board) waypoint at the vessel's position.
3	Arrows	On any full screen page: press to position the cursor on the image. Press to pan the image in any direction. On multi-panel pages: press to select panel. In menus and dialogs: press to highlight an option.
4	Exit (X)	On a maximized multi-panel page: press to return to the multi-panel page. In menus and dialogs: press to return to previous menu level and to exit a dialog.
5	Menu/ Enter	On any full screen page with no menu or dialog active: press to display the menu. On multi-panel pages: press to maximize the current selected panel. In menus and dialogs: press to confirm a selection.
6	Cursor/ Waypoint	Press to activate/deactivate the cursor. Press and hold to save a waypoint.
7	Power	Press to display the System Controls dialog. Press and hold to power the unit on/off.

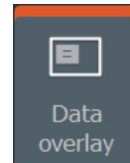
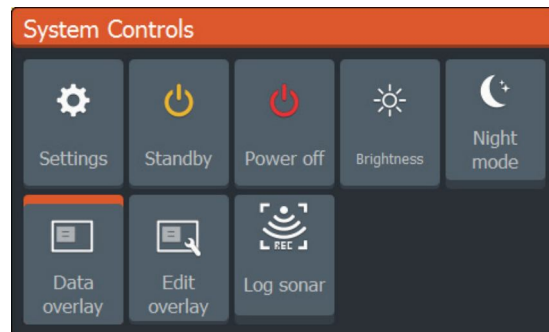


Micro SD card

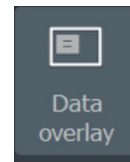


The card reader position depends on model.

System controls dialog



- Option ON

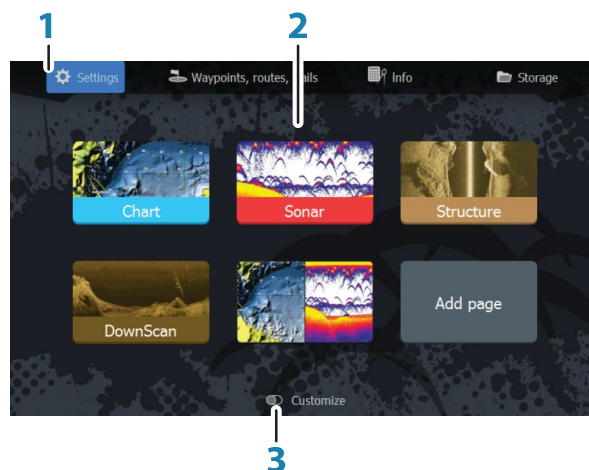


- Option OFF

Display illumination

- Set brightness and select day/night mode from the System Controls dialog
- Repeat short presses on the Power key to cycle the backlight brightness

The Home page



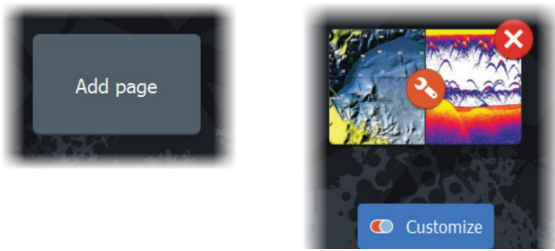
1. Tools panel
2. Page icons
3. Customize option

→ **Note:** Page icons on the Home page vary with model type.

Pages

Select a page icon on the Home page to display a page.

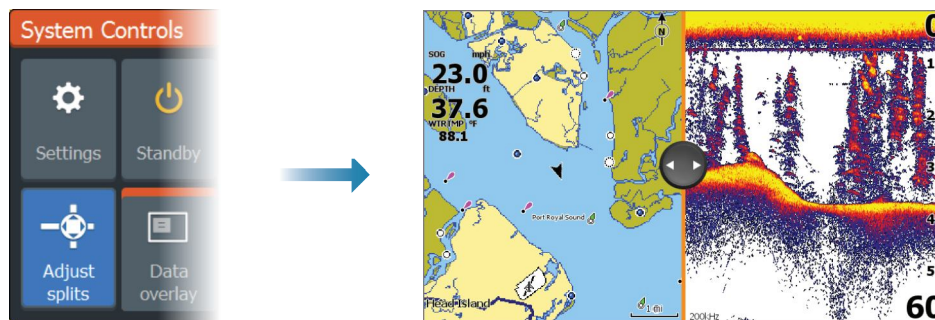
Custom pages



- Select the **Add Page** icon to create a custom page
- Switch **Customize** ON to edit custom pages

Multi-panel pages

- With cursor not active on any panel: switch active panel by using the Arrow keys. An active panel is indicated with an orange border
- Activate the cursor by pressing the Cursor/Waypoint key, then use the arrow keys to position the cursor
- Maximize the active panel by pressing the Menu/Enter key. Press the X key to go back to the multi-panel page
- Adjust panel size by selecting **Adjust** in the System controls dialog, then use the Arrow keys to set preferred panel size. Confirm the layout by pressing the Menu/Enter key



→ **Note:** You must maximize a panel in a multi-panel page to use the panel menu.

Charts and GPS plotter pages

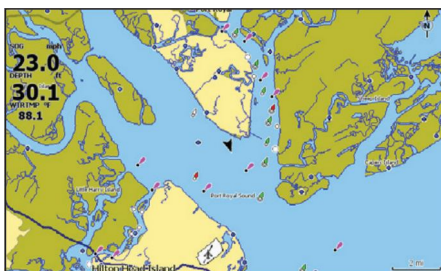
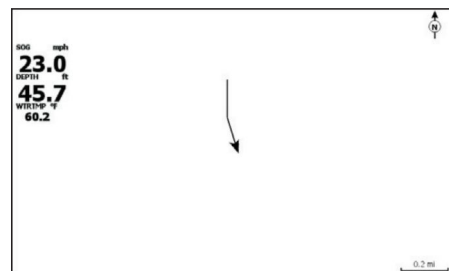


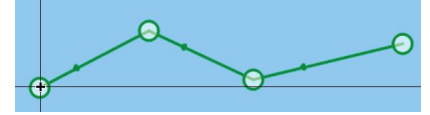
Chart page (not available for 7x TS models)



GPS Plotter page (7x TS models)

- Zoom the image by using the Zoom keys
- Pan the image in any direction by using the Arrow keys
- Display item information by positioning the cursor on an item and then pressing the Menu/Enter key

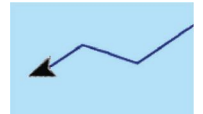
Creating a route on a chart/GPS Plotter page



1. Activate a full screen page or maximize the panel on a multi-panel page
2. Press the Menu/Enter key to activate the menu, then select the **New route** option in the menu
3. Press the Arrow keys to position the first route point, then press Menu/Enter key to confirm the position
4. Repeat step 3 to position additional route points
5. Press the X key to save the route

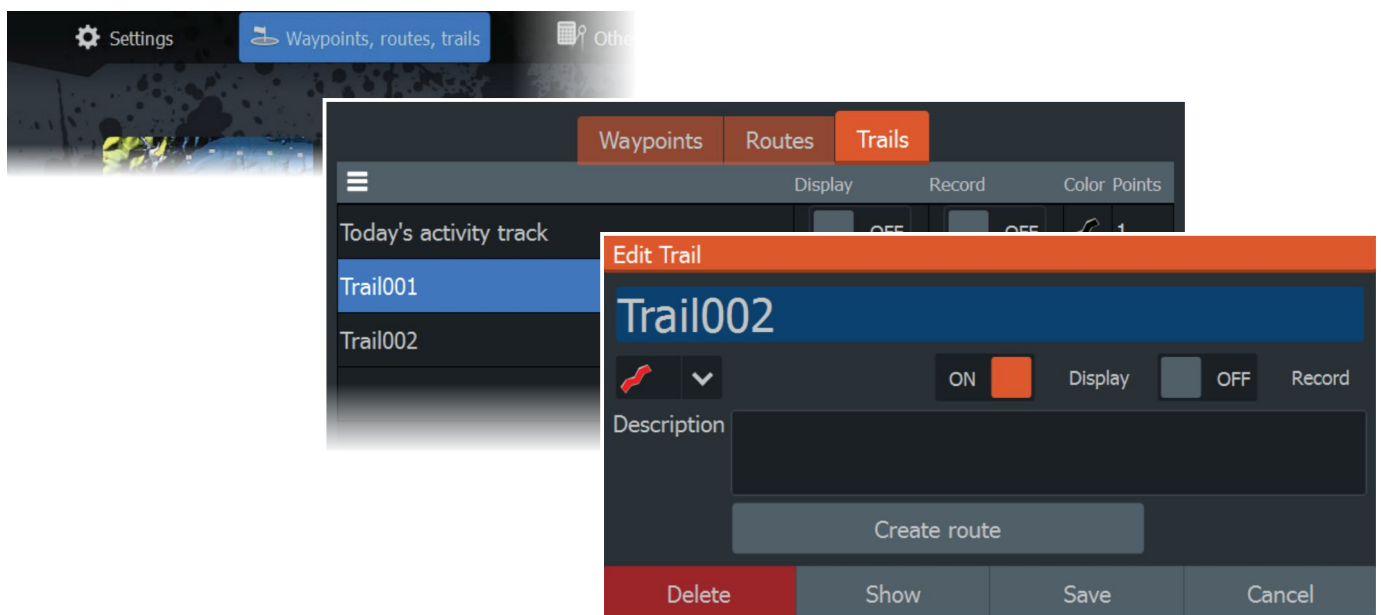
Trails

The system automatically tracks and draws the vessel's movement on the chart/GPS Plotter panel. Trails are managed from the Trails dialog.



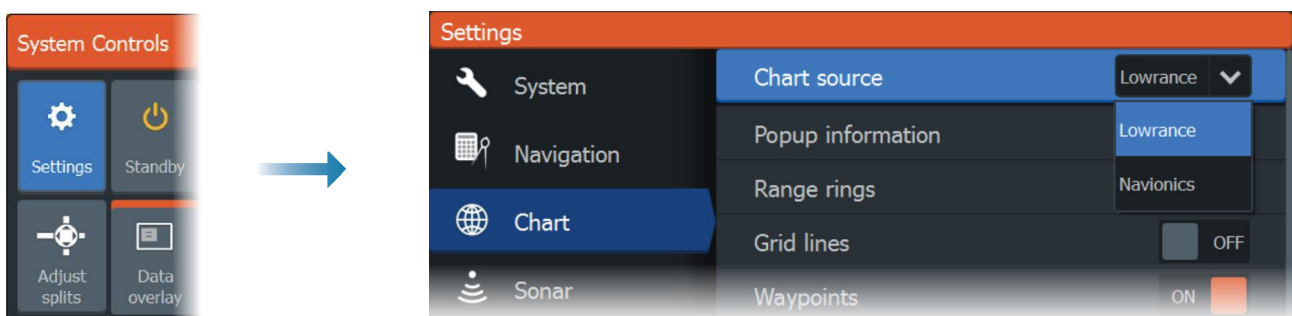
To display the trails dialog:

1. Select **Waypoints, Routes, Trails** from the Home page
2. Select the **Trails** tab in the dialog
3. Select the trail you want to edit

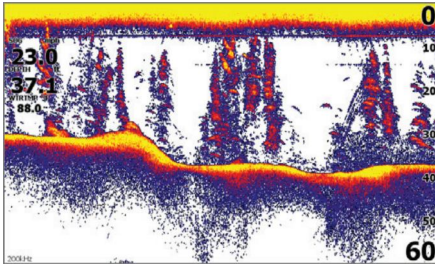


Change chart source if card is inserted

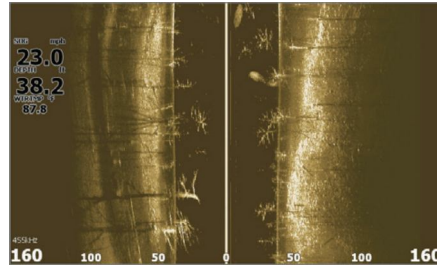
→ **Note:** Charts not available for 7x TS models.



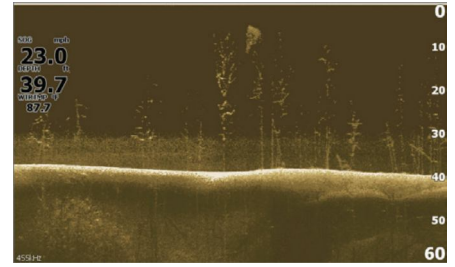
Sonar, StructureScan and DownScan pages



Sonar



*StructureScan
(TripleShot models)*

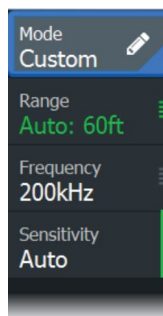
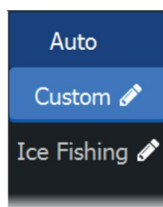
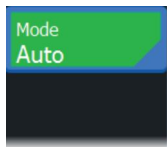


DownScan

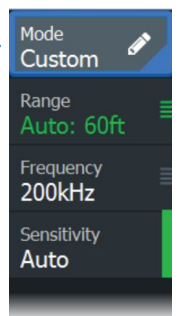
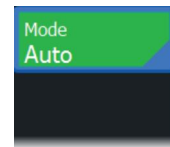
- Zoom the image by using the Zoom keys
- Use the Arrow keys to view the sonar history

By default the unit is set to **Auto** mode, and all settings are automated.

- Change to **Custom** mode to allow for customizing the settings.



Sonar



StructureScan and DownScan

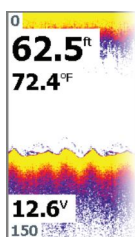
Creating waypoints

Press and hold the Cursor/Waypoint key to save a new waypoint.

- With cursor inactive, the waypoint is placed at the vessel's position
- With cursor active, the waypoint is placed at the cursor position

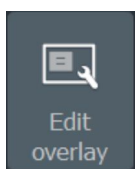


Overlay data



The data type can be changed, and the item position on the image is selectable.

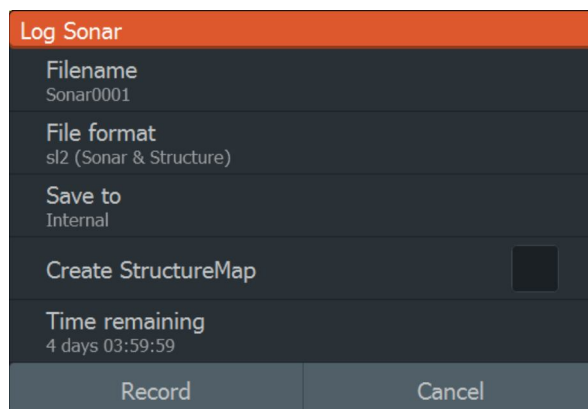
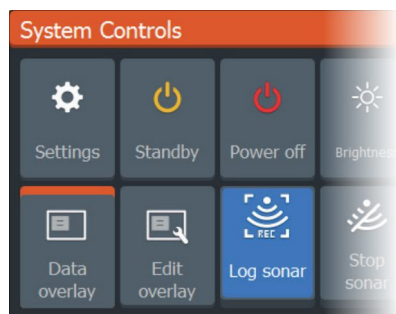
The data items can be turned on/off from the System Controls dialog. Each data item can be removed individually from the panel:



1. Select the **Edit overlay** option in the System Controls dialog to turn the unit into edit mode
2. Press the Menu/Enter key to display edit options
3. Press the X key to leave edit mode

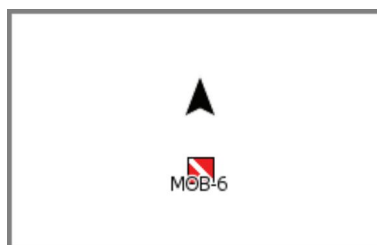
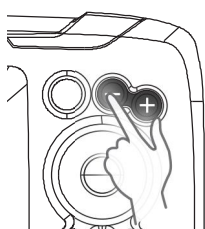
Logging sonar data

Sonar data can be logged and saved to internal memory.



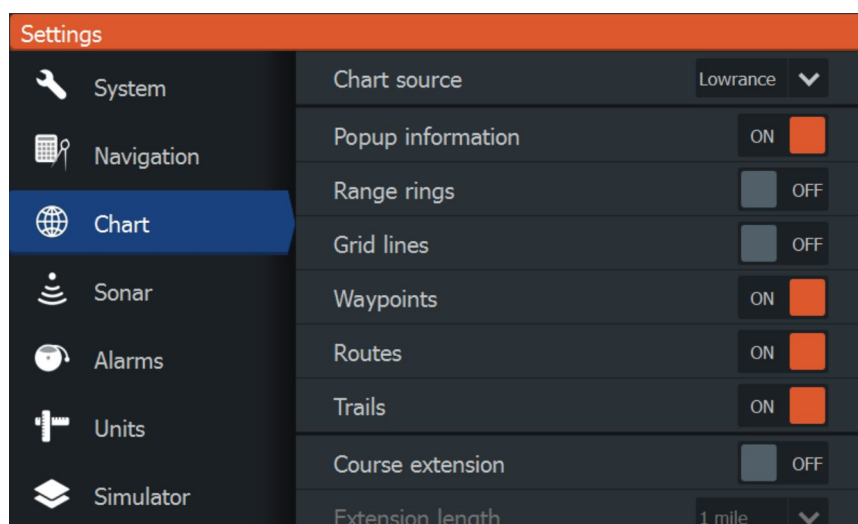
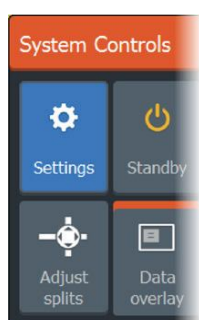
Creating a Man Over Board (MOB) waypoint

Activate a MOB waypoint by pressing both Zoom keys simultaneously.



Settings dialogs

Used for system configuration.



Product manuals

For the full Operator manual, technical specifications and declarations, refer to the product website on: www.lowrance.com.