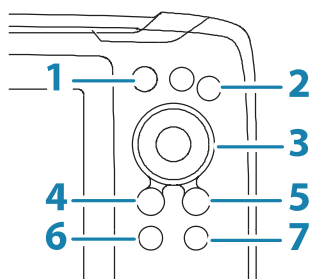


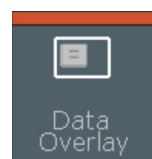
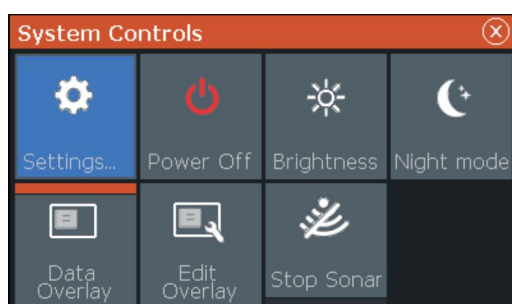
## 4x Sonar models

### Front controls

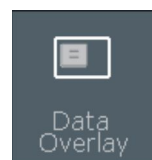


<b>1</b>	<b>Pages</b>	Press to toggle between the sonar and the flasher page.
<b>2</b>	<b>Zoom in/out</b>	Press to zoom the sonar image.
<b>3</b>	<b>Arrows</b>	In menus and dialogs: press the up/down arrows to highlight an option.
<b>4</b>	<b>Exit (X)</b>	Press to return to previous menu level and to exit a dialog.
<b>5</b>	<b>Menu/Enter</b>	With no menu or dialog active: press to display the menu. In menus and dialogs: press to confirm a selection.
<b>6</b>	<b>Fish</b>	Press to toggle between fish ID and traditional sonar echoes.
<b>7</b>	<b>Power</b>	Press to display the System Controls dialog. Press and hold to power the unit on/off.

### System Controls dialog



- Option ON



- Option OFF

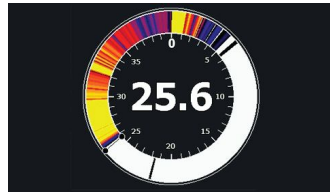
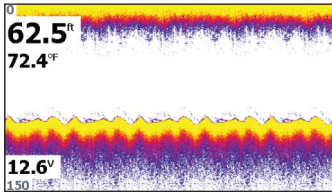
### Display illumination

- Set brightness and select day/night mode from the System Controls dialog
- Repeat short presses on the Power key to cycle the backlight brightness



\* 9 8 8 - 1 1 9 5 6 - 0 0 1 \*

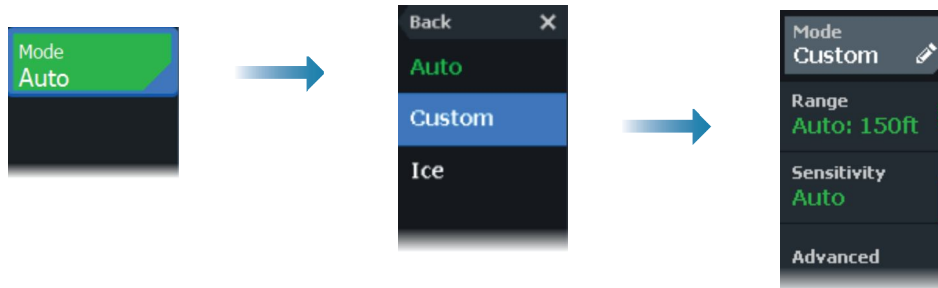
## Pages



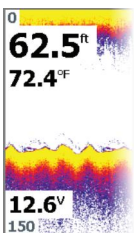
- Toggle between the Sonar and the Flasher pages by pressing the Pages key
- Zoom the sonar image by using the Zoom keys

By default the unit is set to **Auto** mode, and all settings are automated.

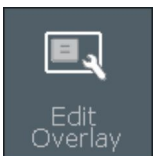
- Change to **Custom** mode to allow for customizing the settings.



## Overlay data



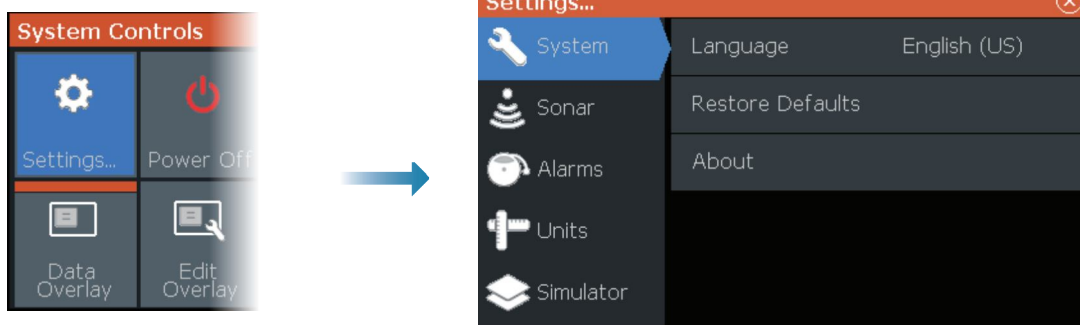
By default, 3 data items are displayed on the image. The data items are predefined (depth, temperature and voltage), and the position is fixed. The data items can be turned on/off from the System Controls dialog. Each data item can be removed individually from the image:



1. Select the **Edit overlay** option in the System Controls dialog to turn the unit into edit mode
2. Press the Menu/Enter key to display edit options
3. Press the X key to leave edit mode

## Settings dialogs

Used for system configuration.



## Product manuals

For the full Operator manual, technical specifications and declarations refer to the product website: [www.lowrance.com](http://www.lowrance.com).