



Scan here to save a copy



NSX® QUICK START GUIDE

Simrad NSX® multi-function display (MFD) is available in multiple sizes. This document describes the basic controls of the unit.

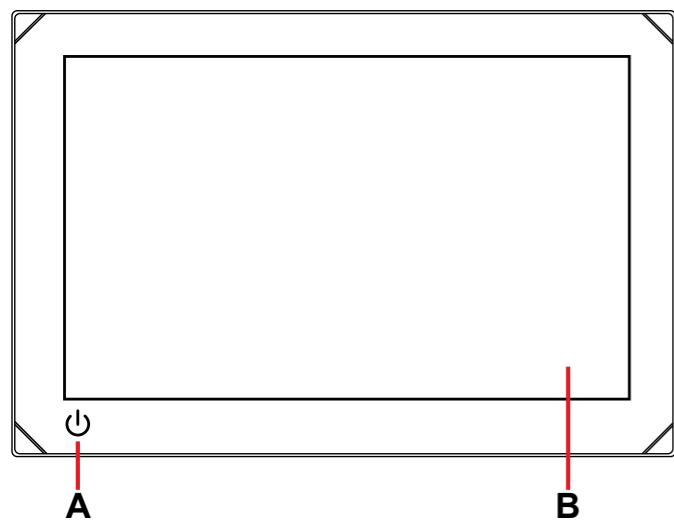
For the latest version of this document and other app guides, we recommend you download the **Simrad: Boating & Navigation** mobile app, scan the QR code®, and connect with your NSX®, or visit: www.simrad-yachting.com/downloads/nsx.

→ **Note:** Refer to the enclosed Installation Manual before you turn on the unit.

BASIC CONTROLS

To turn the unit on, press and hold the power button. A beep indicates the unit is powering up.

To turn the unit off, press and hold the power button, or select **Power off** from the quick access menu.



- A Power button
- B Touchscreen

External power control

Power to the unit can be controlled by an external switch or other units. For details about available power options, refer to the unit's installation manual.

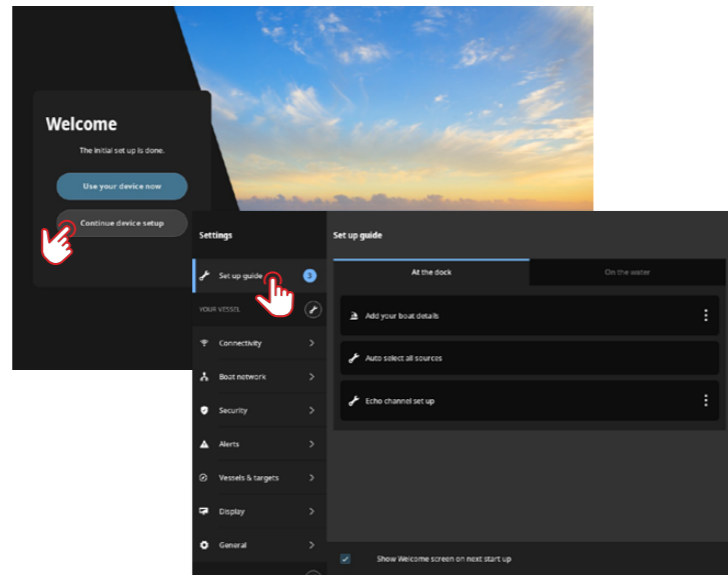
→ **Note:** If your MFD is controlled by an external power source, it can't be powered off using the power button. Pressing and holding the power button puts the unit in standby mode. To wake the unit, press the power button again.

FIRST STARTUP

When you start the unit for the first time, or when you start it after a factory reset, you need to complete the initial setup for language, country, timezone, scan for an existing boat network, and follow the on screen prompts.

SETUP GUIDE

On the **Welcome** screen, select **Continue device setup** to complete the device settings. Alternatively, select the settings icon then select **Setup guide**.

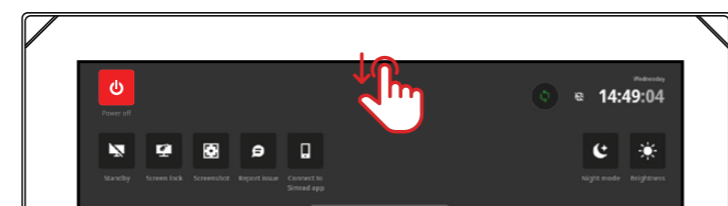


→ **Note:** It is important to set up the MFD for accurate navigation and safety at sea.

QUICK ACCESS MENU

The quick access menu gives you immediate access to basic system settings and features. Press the power button once to display the quick access menu or swipe down from the top of the screen.

The image below illustrates the screen from a unit connected to an external power control.



→ **Note:** To hide the quick access menu, swipe up or tap anywhere on the screen.

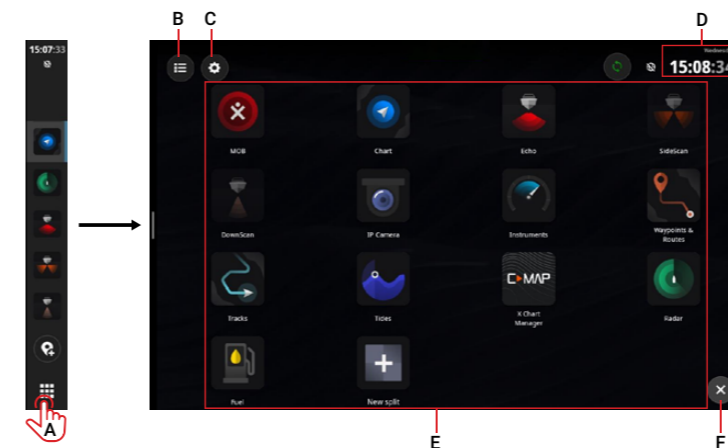
APPS

An app is a program for a unique feature or function. The availability of some apps depends on the size of your unit and the hardware that is connected.

For app-specific user guides, download the Simrad app on your mobile device and connect it to your display unit, or visit: www.simrad-yachting.com/downloads/nsx.

HOME SCREEN

To open your home screen, select the home button on the recent apps panel (A). All apps, settings, and alert messages can be accessed from the home screen.



- A Home button — select to view the home screen
- B Alerts list — select to view recent and historic system alerts
- C Settings — select to view MFD settings
- D Status bar — displays the current day and time
- E Apps — displays a grid layout of all system and custom app groups
- F Exit — select to exit the home screen and return to the last used app

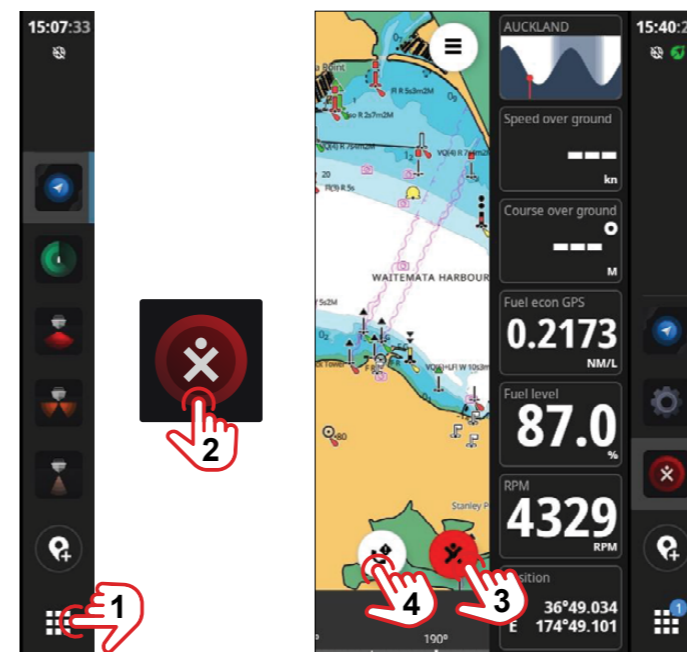
→ **Note:** The exit button (F) is disabled if there are no active apps.

EMERGENCY AND MOB

Use the person overboard (MOB) app for emergency situations. To open the app, select **MOB** (2) on the home screen.

Select overboard marker (3) to create a MOB waypoint at your vessel's location. Now select the call assistance button (4) to view helpful prompts when seeking assistance.

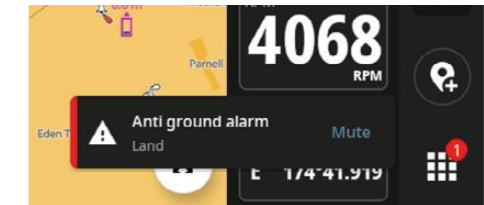
Follow the instructions to respond to the emergency.



→ **Note:** Use the Waypoints & Routes app to remove your MOB waypoint.

ALERTS

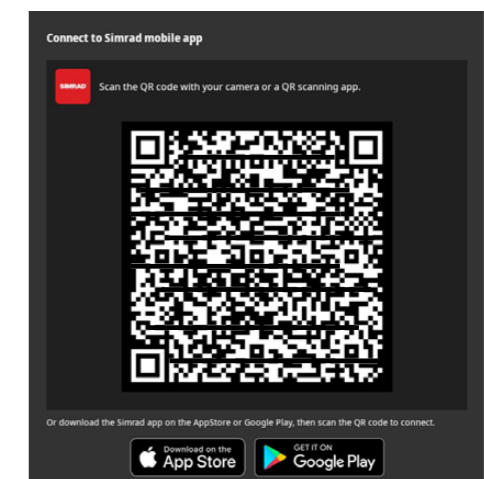
The unit continuously monitors connected sensors and devices for alerts, system faults, and environmental changes. Alerts can be configured by setting up rules, navigate to **Settings > Alerts**.



CONNECT TO MOBILE APP

Select **Connect to Simrad app** from the quick access menu to connect your mobile device (phone or tablet) to the unit.

Download the **Simrad: Boating & Navigation** app from the App Store® or Google Play®, then scan the QR code®.



Once connected, you can use the mobile app to:

- View and download app guides on your mobile device
- Register your display unit
- Subscribe to Premium charts
- Create your own waypoints, routes and tracks
- Explore points of interest (POI)
- Monitor marine traffic and weather
- Read the latest tips and tricks
- Download and apply software updates to the display unit

→ **Note:** An internet connection is required for most of the above features.

TRADEMARKS

- Navico® is a trademark of Navico Group.
- Simrad® is a trademark of Kongsberg Maritime AS, licensed to Navico Group.
- NSX® is a trademark of Navico Group.
- QR Code® is a trademark of Denso Wave Incorporated.
- App Store® and App Store Logos are trademarks of Apple Inc.
- Google Play® and Google Play logos are trademarks of Google LLC.